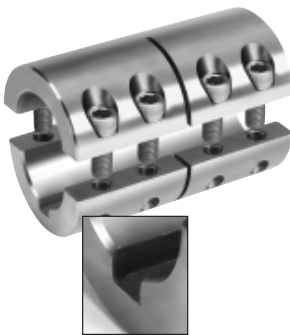


Two-Piece Industry Standard Clamping Couplings - 2ISCC-Series



- High axial load and torque capacity
- Does not mar the shaft
- Easily installed without major disassembly

| Black Oxide Steel | Stainless Steel | Bore Size | 2nd Bore Size | OD | Length | Clamp Screw | Box Qty | Approx. Weight (oz.) |
|-------------------|-----------------|-----------|---------------|--------|--------|--------------|---------|----------------------|
| 2ISCC-025-025 | 2ISCC-025-025-S | 1/4 | 1/4 | 11/16 | 1 1/8 | 4-40 x 3/8 | 10 | 1.50 |
| 2ISCC-037-025 | 2ISCC-037-025-S | 3/8 | 1/4 | 7/8 | 1 3/8 | 6-32 x 3/8 | 5 | 2.60 |
| 2ISCC-037-037 | 2ISCC-037-037-S | 3/8 | 3/8 | 7/8 | 1 3/8 | 6-32 x 3/8 | 5 | 2.60 |
| 2ISCC-050-037 | 2ISCC-050-037-S | 1/2 | 3/8 | 1 1/8 | 1 3/4 | 8-32 x 1/2 | 5 | 5.70 |
| 2ISCC-050-050 | 2ISCC-050-050-S | 1/2 | 1/2 | 1 1/8 | 1 3/4 | 8-32 x 1/2 | 5 | 5.70 |
| 2ISCC-062-050 | 2ISCC-062-050-S | 5/8 | 1/2 | 1 5/16 | 2 | 10-32 x 1/2 | 5 | 8.50 |
| 2ISCC-062-062 | 2ISCC-062-062-S | 5/8 | 5/8 | 1 5/16 | 2 | 10-32 x 1/2 | 5 | 8.50 |
| 2ISCC-075-050 | 2ISCC-075-050-S | 3/4 | 1/2 | 1 1/2 | 2 1/4 | 1/4-28 x 5/8 | 5 | 12.20 |
| 2ISCC-075-062 | 2ISCC-075-062-S | 3/4 | 5/8 | 1 1/2 | 2 1/4 | 1/4-28 x 5/8 | 5 | 12.20 |
| 2ISCC-075-075 | 2ISCC-075-075-S | 3/4 | 3/4 | 1 1/2 | 2 1/4 | 1/4-28 x 5/8 | 5 | 12.20 |
| 2ISCC-087-062 | 2ISCC-087-062-S | 7/8 | 5/8 | 1 5/8 | 2 1/2 | 1/4-28 x 5/8 | 5 | 15.40 |
| 2ISCC-087-087 | 2ISCC-087-087-S | 7/8 | 7/8 | 1 5/8 | 2 1/2 | 1/4-28 x 5/8 | 5 | 15.40 |
| 2ISCC-100-050 | 2ISCC-100-050-S | 1 | 1/2 | 1 3/4 | 3 | 1/4-28 x 5/8 | 2 | 23.60 |
| 2ISCC-100-075 | 2ISCC-100-075-S | 1 | 3/4 | 1 3/4 | 3 | 1/4-28 x 5/8 | 2 | 23.60 |
| 2ISCC-100-100 | 2ISCC-100-100-S | 1 | 1 | 1 3/4 | 3 | 1/4-28 x 5/8 | 2 | 23.60 |
| 2ISCC-112-100 | 2ISCC-112-100-S | 1 1/8 | 1 | 1 7/8 | 3 1/8 | 1/4-28 x 5/8 | 2 | 33.00 |
| 2ISCC-112-112 | 2ISCC-112-112-S | 1 1/8 | 1 1/8 | 1 7/8 | 3 1/8 | 1/4-28 x 5/8 | 2 | 33.00 |
| 2ISCC-125-100 | 2ISCC-125-100-S | 1 1/4 | 1 | 2 1/16 | 3 1/4 | 1/4-28 x 3/4 | 2 | 28.40 |
| 2ISCC-125-125 | 2ISCC-125-125-S | 1 1/4 | 1 1/4 | 2 1/16 | 3 1/4 | 1/4-28 x 3/4 | 2 | 28.40 |
| 2ISCC-137-100 | 2ISCC-137-100-S | 1 3/8 | 1 | 2 1/2 | 3 5/8 | 5/16-24 x 1 | 2 | 37.00 |
| 2ISCC-137-137 | 2ISCC-137-137-S | 1 3/8 | 1 3/8 | 2 1/2 | 3 5/8 | 5/16-24 x 1 | 2 | 37.00 |
| 2ISCC-150-100 | 2ISCC-150-100-S | 1 1/2 | 1 | 2 5/8 | 3 7/8 | 5/16-24 x 1 | 1 | 49.50 |
| 2ISCC-150-150 | 2ISCC-150-150-S | 1 1/2 | 1 1/2 | 2 5/8 | 3 7/8 | 5/16-24 x 1 | 1 | 49.50 |
| 2ISCC-175-175 | 2ISCC-175-175-S | 1 3/4 | 1 3/4 | 3 1/8 | 4 1/2 | 3/8-24 x 1 | 1 | 102.30 |
| 2ISCC-200-200 | 2ISCC-200-200-S | 2 | 2 | 3 3/8 | 4 7/8 | 3/8-24 x 1 | 1 | 107.00 |



DIMENSION
Bore, Inch

TOLERANCE
+.003/- .000

| Black Oxide Steel With Keyway | Stainless Steel With Keyway | Bore Size | 2nd Bore Size | OD | Length | Clamp Screw | Box Qty | Approx. Weight (oz.) |
|-------------------------------|-----------------------------|-----------|---------------|--------|--------|--------------|---------|----------------------|
| 2ISCC-037-037KW | 2ISCC037-037SKW | 3/8 | 3/8 | 7/8 | 1 3/8 | 6-32 x 3/8 | 5 | 2.60 |
| 2ISCC-050-037KW | 2ISCC050-037SKW | 1/2 | 3/8 | 1 1/8 | 1 3/4 | 8-32 x 1/2 | 5 | 5.70 |
| 2ISCC-050-050KW | 2ISCC050-050SKW | 1/2 | 1/2 | 1 1/8 | 1 3/4 | 8-32 x 1/2 | 5 | 5.70 |
| 2ISCC-062-050KW | 2ISCC062-050SKW | 5/8 | 1/2 | 1 5/16 | 2 | 10-32 x 1/2 | 5 | 8.50 |
| 2ISCC-062-062KW | 2ISCC062-062SKW | 5/8 | 5/8 | 1 5/16 | 2 | 10-32 x 1/2 | 5 | 8.50 |
| 2ISCC-075-050KW | 2ISCC075-050SKW | 3/4 | 1/2 | 1 1/2 | 2 1/4 | 1/4-28 x 5/8 | 5 | 12.20 |
| 2ISCC-075-062KW | 2ISCC075-062SKW | 3/4 | 5/8 | 1 1/2 | 2 1/4 | 1/4-28 x 5/8 | 5 | 12.20 |
| 2ISCC-075-075KW | 2ISCC075-075SKW | 3/4 | 3/4 | 1 1/2 | 2 1/4 | 1/4-28 x 5/8 | 5 | 12.20 |
| 2ISCC-087-062KW | 2ISCC087-062SKW | 7/8 | 5/8 | 1 5/8 | 2 1/2 | 1/4-28 x 5/8 | 5 | 15.40 |
| 2ISCC-087-087KW | 2ISCC087-087SKW | 7/8 | 7/8 | 1 5/8 | 2 1/2 | 1/4-28 x 5/8 | 5 | 15.40 |
| 2ISCC-100-050KW | 2ISCC100-050SKW | 1 | 1/2 | 1 3/4 | 3 | 1/4-28 x 5/8 | 2 | 23.60 |
| 2ISCC-100-075KW | 2ISCC100-075SKW | 1 | 3/4 | 1 3/4 | 3 | 1/4-28 x 5/8 | 2 | 23.60 |
| 2ISCC-100-100KW | 2ISCC100-100SKW | 1 | 1 | 1 3/4 | 3 | 1/4-28 x 5/8 | 2 | 23.60 |
| 2ISCC-112-100KW | 2ISCC112-100SKW | 1 1/8 | 1 | 1 7/8 | 3 1/8 | 1/4-28 x 5/8 | 2 | 33.00 |
| 2ISCC-112-112KW | 2ISCC112-112SKW | 1 1/8 | 1 1/8 | 1 7/8 | 3 1/8 | 1/4-28 x 5/8 | 2 | 33.00 |
| 2ISCC-125-100KW | 2ISCC125-100SKW | 1 1/4 | 1 | 2 1/16 | 3 1/4 | 1/4-28 x 5/8 | 2 | 28.40 |
| 2ISCC-125-125KW | 2ISCC125-125SKW | 1 1/4 | 1 1/4 | 2 1/16 | 3 1/4 | 1/4-28 x 5/8 | 2 | 28.40 |
| 2ISCC-137-100KW | 2ISCC137-100SKW | 1 3/8 | 1 | 2 1/2 | 3 5/8 | 5/16-24 x 1 | 2 | 37.00 |
| 2ISCC-137-137KW | 2ISCC137-137SKW | 1 3/8 | 1 3/8 | 2 1/2 | 3 5/8 | 5/16-24 x 1 | 2 | 37.00 |
| 2ISCC-150-100KW | 2ISCC150-100SKW | 1 1/2 | 1 | 2 5/8 | 3 7/8 | 5/16-24 x 1 | 1 | 49.50 |
| 2ISCC-150-150KW | 2ISCC150-150SKW | 1 1/2 | 1 1/2 | 2 5/8 | 3 7/8 | 5/16-24 x 1 | 1 | 49.50 |
| 2ISCC-175-175KW | 2ISCC175-175SKW | 1 3/4 | 1 3/4 | 3 1/8 | 4 1/2 | 3/8-24 x 1 | 1 | 102.30 |
| 2ISCC-200-200KW | 2ISCC200-200SKW | 2 | 2 | 3 3/8 | 4 7/8 | 3/8-24 x 1 | 1 | 107.00 |