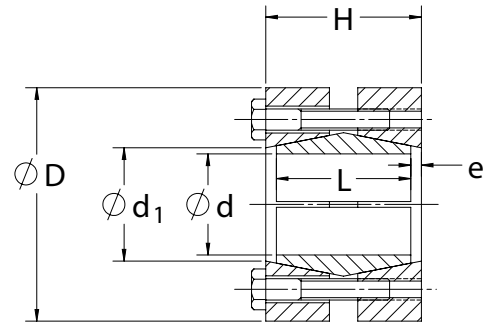




## SERIES C600 KEYLESS RIGID COUPLINGS

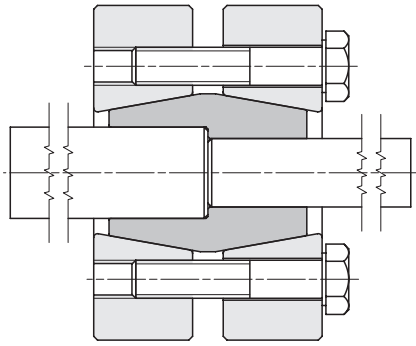
- Cost effective shaft-to-shaft keyless connection
- High torque and bending moment capacity
- Preferred solution for torque-arm mounted hydraulic drives
- Available with stepped bore upon request



### Inch

CLIMAX Part No.	Type	Shaft Size (in)	d	M <sub>t</sub> (ft-lbs)	D	H	L	e	d <sub>1</sub>	Locking Screws		
										Qty.	Size	M <sub>a</sub> (ft-lbs)
C600E-062	15	5/8	0.625	167	2.047	1.339	1.181	0.079	0.827	3	M6 x 30	9
C600E-068		11/16	0.69	184								
C600E-075		3/4	0.750	200								
C600E-081	20	13/16	0.8125	362	2.362	1.575	1.339	0.118	1.024	5	M6 x 35	9
C600E-087		7/8	0.875	390								
C600E-093		15/16	0.9375	418								
C600E-100	25	1	1.000	624	2.598	1.732	1.496	0.118	1.260	7	M6 x 35	9
C600E-106		1 1/16	1.0625	662								
C600E-112		1 1/8	1.125	701								
C600E-118	30	1 3/16	1.1875	846	2.992	1.890	1.654	0.118	1.496	8	M6 x 40	9
C600E-125		1 1/4	1.250	891								
C600E-137		1 3/8	1.375	980								
C600E-143	40	1 7/16	1.4375	1,721	3.780	2.205	1.969	0.118	1.850	7	M8 x 45	22
C600E-150		1 1/2	1.500	1,796								
C600E-162		1 5/8	1.625	1,946								
C600E-168		1 11/16	1.6875	2,021								
C600E-175		1 3/4	1.750	2,095								
C600E-187	50	1 7/8	1.875	3,207	4.409	2.676	2.362	0.157	2.283	10	M8 x 50	22
C600E-193		1 15/16	1.9375	3,314								
C600E-200		2	2.000	3,421								
C600E-212		2 1/8	2.125	3,635								
C600E-218	60	2 3/16	2.1875	4,490	4.724	3.071	2.756	0.157	2.598	12	M8 x 55	22
C600E-225		2 1/4	2.250	4,618								
C600E-237		2 3/8	2.375	4,875								
C600E-243		2 7/16	2.4375	5,003								
C600E-250		2 1/2	2.500	5,132								
C600E-256	70	2 9/16	2.5625	8,197	5.826	3.464	3.150	0.157	3.110	12	M10 x 65	44
C600E-262		2 5/8	2.625	8,397								
C600E-268		2 11/16	2.6875	8,597								
C600E-275		2 3/4	2.750	8,797								
C600E-287		2 7/8	2.875	9,197								
C600E-293	80	2 15/16	2.9375	11,357	6.693	4.095	3.701	0.197	3.701	10	M12 x 80	74
C600E-300		3	3.000	11,599								
C600E-312		3 1/8	3.125	12,082								
C600E-325		3 1/4	3.250	12,566								
C600E-337		3 3/8	3.375	13,049								
C600E-343	90	3 7/16	3.4375	15,949	7.283	4.567	4.173	0.197	4.094	12	M12 x 80	74
C600E-350		3 1/2	3.500	16,239								
C600E-362		3 5/8	3.625	16,819								
C600E-375		3 3/4	3.750	17,399								
C600E-387		3 7/8	3.875	17,979								
C600E-393	100	3 15/16	3.9375	22,836	7.756	4.960	4.488	0.236	4.488	15	M12 x 90	74
C600E-400		4	4.000	23,198								
C600E-425		4 1/4	4.250	24,648								

All dimensions are shown in inches unless stated otherwise. All dimensions and capacities are subject to change without notice.



### SERIES C600 KEYLESS RIGID COUPLINGS

CLIMAX Series C600 Keyless Rigid Coupling accommodates different shaft diameters with a stepped-bore inner ring. Our C600 is a cost-effective design alternative to a foot-mounted hydraulic drive with a flexible coupling. See Page 9 for application details.



### Metric

CLIMAX Part No.	Type	Shaft Size (mm)	d	M <sub>t</sub> (ft-lbs)	D	H	L	e	d <sub>1</sub>	Locking Screws		
										Qty.	Size	M <sub>a</sub> (ft-lbs)
C600M-6	6	6	0.236	34	1.38	0.748	0.630	0.060	0.394	4	M5 x 16	3
C600M-7		7	0.276	40								
C600M-8		8	0.315	46								
C600M-9	9	9	0.354	64	1.54	0.906	0.787	0.060	0.512	5	M5 x 20	3
C600M-10		10	0.394	71								
C600M-11		11	0.433	78								
C600M-12	12	12	0.472	102	1.73	1.181	1.024	0.079	0.630	6	M5 x 25	3
C600M-13		13	0.512	111								
C600M-14		14	0.551	120								
C600M-15	15	15	0.591	158	2.047	1.339	1.181	0.079	0.827	3	M6 x 30	9
C600M-16		16	0.630	168								
C600M-17		17	0.669	179								
C600M-18		18	0.709	189								
C600M-19		19	0.748	200								
C600M-20	20	20	0.787	351	2.362	1.575	1.339	0.118	1.024	5	M6 x 35	9
C600M-22		22	0.866	386								
C600M-24		24	0.945	421								
C600M-25	25	25	0.984	614	2.598	1.732	1.496	0.118	1.260	7	M6 x 35	9
C600M-28		28	1.102	687								
C600M-29		29	1.142	712								
C600M-30	30	30	1.181	842	2.992	1.890	1.654	0.118	1.496	8	M6 x 40	9
C600M-32		32	1.260	898								
C600M-35		35	1.378	982								
C600M-36	40	36	1.417	1,697	3.780	2.205	1.969	0.118	1.850	7	M8 x 45	22
C600M-40		40	1.575	1,886								
C600M-44		44	1.732	2,074								
C600M-50	50	50	1.969	3,367	4.409	2.676	2.362	0.157	2.283	10	M8 x 50	22
C600M-51		51	2.008	3,434								
C600M-54		54	2.126	3,637								
C600M-55	60	55	2.165	4,445	4.724	3.071	2.756	0.157	2.598	12	M8 x 55	22
C600M-60		60	2.362	4,849								
C600M-63		63	2.480	5,091								
C600M-65	70	65	2.559	8,186	5.826	3.464	3.150	0.157	3.110	12	M10 x 65	44
C600M-68		68	2.677	8,564								
C600M-70		70	2.756	8,816								
C600M-73		73	2.874	9,194								
C600M-74	80	74	2.913	11,264	6.693	4.095	3.701	0.197	3.701	10	M12 x 80	74
C600M-76		76	2.992	11,569								
C600M-80		80	3.150	12,178								
C600M-85		85	3.346	12,939								
C600M-86	90	86	3.386	15,709	7.283	4.567	4.173	0.197	4.094	12	M12 x 80	74
C600M-90		90	3.543	16,440								
C600M-92		92	3.622	16,805								
C600M-96		96	3.780	17,536								
C600M-100	100	100	3.937	22,833	7.756	4.960	4.488	0.236	4.488	15	M12 x 90	74
C600M-106		106	4.173	24,203								
C600M-108		108	4.252	24,660								
C600M-110		110	4.331	25,116								
C600M-120	120	120	4.724	42,083	9.055	5.984	5.433	0.276	5.276	12	M16 x 110	184
C600M-130		130	5.118	45,590								
C600M-140	140	140	5.512	65,462	11.42	6.850	6.299	0.276	6.299	16	M16 x 120	184
C600M-150		150	5.906	70,138								

All dimensions are shown in inches unless stated otherwise. All dimensions and capacities are subject to change without notice.