

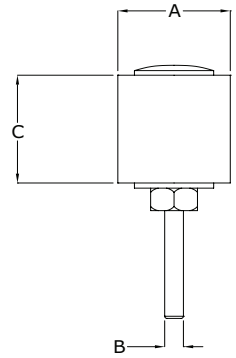


CLESCO
"The Abrasive Hardware Specialist"

Sanding Drums



- For mounting abrasive sanding sleeves
- Sleeves are secured in place by controlled expansion of the solid rubber drum spindle
- Rubber provides cushion backing for a smooth, even finish



Standard Screw Lock - with Shank

- Rubber expansion is controlled by tightening/loosening the slotted screw

| (B) Shank Dia. | (A) Drum Dia. | (C) Drum Width | | | |
|----------------------|---------------------|-----------------|----------------|----------------|----------------|
| | | 1/2" | 3/4" | 1" | 1-1/2" |
| 3/32 | 1/4 | SD-004008-332SL | | | |
| 3/32 | 3/8 | SD-006008-332SL | | | |
| 3/32 | 1/2 | SD-008008-332SL | | | |
| 3/32 | 3/4 | SD-012008-332SL | | | |
| 1/8 | 1/4 | SD-004008-02SL | SD-004012-02SL | SD-004016-02SL | SD-004024-02SL |
| 1/8 | 3/8 | SD-006008-02SL | SD-006012-02SL | SD-006016-02SL | |
| 1/8 | 1/2 | SD-008008-02SL | | | |
| 1/8 | 3/4 | SD-012008-02SL | | | |
| 1/4 | 1/4 | SD-004008-04SL | | SD-004016-04SL | |
| 1/4 | 3/8 | SD-006008-04SL | | SD-006016-04SL | SD-006024-04SL |
| 1/4 | 1/2 | SD-008008-04SL | | | |

Standard Nut Lock – with Shank

- Rubber expansion is controlled by tightening/loosening the hex nut
- The rubber spindle is seated directly on the drive mandrel (arbor)



| (B) Shank Dia. | (A) Drum Dia. | (C) Drum Width | | | | | |
|----------------------|---------------------|----------------|----------------|----------------|----------------|----------------|----------------|
| | | 1/2" | 3/4" | 1" | 1-1/2" | 2" | 3" |
| 1/8 | 3/8 | SD-006008-02NL | | | | | |
| 1/8 | 1/2 | SD-008008-02NL | SD-008012-02NL | | | | |
| 1/8 | 3/4 | SD-012008-02NL | SD-012012-02NL | | | | |
| 1/4 | 1/2 | SD-008008-04NL | SD-008012-04NL | SD-008016-04NL | SD-008024-04NL | SD-008032-04NL | SD-008048-04NL |
| 1/4 | 5/8 | SD-010008-04NL | | SD-010016-04NL | SD-010024-04NL | SD-010032-04NL | SD-010048-04NL |
| 1/4 | 3/4 | SD-012008-04NL | SD-012012-04NL | SD-012016-04NL | SD-012024-04NL | SD-012032-04NL | SD-012048-04NL |
| 1/4 | 1 | SD-016008-04NL | SD-016012-04NL | SD-016016-04NL | SD-016024-04NL | SD-016032-04NL | SD-016048-04NL |
| 1/4 | 1 1/4 | SD-020008-04NL | SD-020012-04NL | SD-020016-04NL | SD-020024-04NL | SD-020032-04NL | SD-020048-04NL |
| 1/4 | 1 1/2 | SD-024008-04NL | | SD-024016-04NL | SD-024024-04NL | SD-024032-04NL | SD-024048-04NL |
| 1/4 | 1 3/4 | | | | | SD-028032-04NL | |
| 1/4 | 2 | | | SD-032016-04NL | SD-032024-04NL | SD-032032-04NL | SD-032048-04NL |
| 3/8 | 2 | | | | | | SD-032048-06NL |
| 1/4 | 2 1/4 | | | | | | SD-036048-04NL |
| 3/8 | 2 1/4 | | | | | | SD-036048-06NL |
| 1/4 | 3 | | | SD-048016-04NL | | SD-048032-04NL | SD-048048-04NL |
| 3/8 | 3 | | | SD-048016-06NL | | SD-048032-06NL | SD-048048-06NL |
| 1/2 | 3 | | | | | | SD-048048-08NL |

*Maximum RPM's for Clesco Sanding Drums can be found on page 19.

www.climaxmetal.com
Phone: 1-800-542-6552 Fax: 1-800-860-5553

Quick Lock – with Shank



CLESCO

"The Abrasive Hardware Specialist"

- Rubber expansion for these drums is controlled by simply twisting the rubber spindle by hand, no tools necessary
- Turn spindle clockwise to expand rubber for quick-lock, and counter clockwise to loosen for quick-change
- The rubber spindle is seated directly on the drive mandrel (arbor)



| (B) Shank Dia. | (A) Drum Dia. | (C) Drum Width | | | | | |
|----------------------|---------------------|----------------|----------------|----------------|----------------|----------------|----------------|
| | | 1/2" | 3/4" | 1" | 1-1/2" | 2" | 3" |
| 1/4 | 1/2 | SD-008008-04QL | SD-008012-04QL | SD-008016-04QL | SD-008024-04QL | SD-008032-04QL | SD-008048-04QL |
| 1/4 | 5/8 | SD-010008-04QL | | SD-010016-04QL | SD-010024-04QL | | |
| 1/4 | 3/4 | SD-012008-04QL | SD-012012-04QL | SD-012016-04QL | SD-012024-04QL | SD-012032-04QL | SD-012048-04QL |
| 1/4 | 1 | SD-016008-04QL | SD-016012-04QL | SD-016016-04QL | SD-016024-04QL | SD-016032-04QL | SD-016048-04QL |
| 1/4 | 1 1/4 | | | SD-020016-04QL | | SD-020032-04QL | |
| 1/4 | 1 1/2 | | | SD-024016-04QL | SD-024024-04QL | SD-024032-04QL | SD-024048-04QL |
| 1/4 | 1 3/4 | | | | | SD-028032-04QL | |
| 1/4 | 2 | | | SD-032016-04QL | SD-032024-04QL | SD-032032-04QL | SD-032048-04QL |
| 1/4 | 2 1/4 | | | | | SD-036032-04QL | SD-036048-04QL |
| 1/4 | 3 | | | | | SD-048032-04QL | SD-048048-04QL |
| 3/8 | 1/2 | | | | | | SD-008048-06QL |
| 3/8 | 1 | | | | | | SD-016048-06QL |
| 3/8 | 1 1/2 | | | | | | SD-024048-06QL |
| 3/8 | 3 | | | | | | SD-048048-06QL |

Shaft Mount Sanding Drums

- Rubber expansion is controlled by tightening/loosening the hex nut
- Drums for mounting on threaded shafts have a matching internal threaded bore
- Drums for mounting on smooth round shafts are secured to the shaft with two socket setscrews
- Drums for a 1/2" smooth round shaft can also be converted for use in a drill press with a 1/2" chuck capacity by using a shaft adapter
- Ideal for motors, grinders, flex shafts & bench mandrels



| Drum Dia. | Bore | Drum Width | | |
|--------------|------|----------------|----------------|----------------|
| | | 1" | 2" | 3" |
| 3 | 1/2 | SD-048016-08MD | SD-048032-08MD | SD-048048-08MD |
| 3 | 5/8 | | | SD-048048-10MD |
| 3 | 3/4 | | | SD-048048-12MD |

Convertible Sanding Drums



| Catalog # | Description |
|----------------|--|
| SD048048-08MP4 | 3" X 3" Drum with 1/2" bore- with shaft adapter |
| SD048048-08MDP | 3" X 3" Drum with 1/2" bore- with shaft adapter and 80A sleeve |

Threaded Shaft Sanding Drums

| Drum Dia. | Bore | Drum Width 3" |
|--------------|----------|------------------|
| 3 | 1/2-20RH | SD-048048-12FD |
| 3 | 5/8-11RH | SD-048048-58FD |

*Maximum RPM's for Clesco Sanding Drums can be found on page 19.

www.climaxmetal.com

Phone: 1-800-542-6552 Fax: 1-800-860-5553