

CLAMPING COUPLINGS



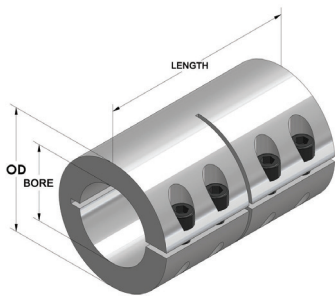
GSCC-SERIES

ONE-PIECE

High axial load and torque capacity

Does not mar the shaft

Other sizes and materials available



PART NUMBER		PRODUCT SPECIFICATIONS				
BLACK OXIDE STEEL	STAINLESS STEEL	BORE SIZE	2ND BORE SIZE	OD	LENGTH	CLAMP SCREW
GSCC-025-025	GSCC-025-025-S	1/4	1/4	11/16	1	4-40
GSCC-037-025	GSCC-037-025-S	3/8	1/4	7/8	1 3/8	6-32
GSCC-037-037	GSCC-037-037-S	3/8	3/8	7/8	1 3/8	6-32
GSCC-050-037	GSCC-050-037-S	1/2	3/8	1 1/8	1 3/4	8-32
GSCC-050-050	GSCC-050-050-S	1/2	1/2	1 1/8	1 3/4	8-32
GSCC-062-050	GSCC-062-050-S	5/8	1/2	1 5/16	2	10-32
GSCC-062-062	GSCC-062-062-S	5/8	5/8	1 5/16	2	10-32
GSCC-075-050	GSCC-075-050-S	3/4	1/2	1 1/2	2 1/4	1/4-28
GSCC-075-062	GSCC-075-062-S	3/4	5/8	1 1/2	2 1/4	1/4-28
GSCC-075-075	GSCC-075-075-S	3/4	3/4	1 1/2	2 1/4	1/4-28
GSCC-087-062	GSCC-087-062-S	7/8	5/8	1 5/8	2 1/2	1/4-28
GSCC-087-087	GSCC-087-087-S	7/8	7/8	1 5/8	2 1/2	1/4-28
GSCC-100-050	GSCC-100-050-S	1	1/2	1 3/4	3	1/4-28
GSCC-100-075	GSCC-100-075-S	1	3/4	1 3/4	3	1/4-28
GSCC-100-100	GSCC-100-100-S	1	1	1 3/4	3	1/4-28
GSCC-112-100	GSCC-112-100-S	1 1/8	1	1 7/8	3 1/8	1/4-28
GSCC-112-112	GSCC-112-112-S	1 1/8	1 1/8	1 7/8	3 1/8	1/4-28
GSCC-125-100	GSCC-125-100-S	1 1/4	1	2 1/8	3 1/4	1/4-28
GSCC-125-125	GSCC-125-125-S	1 1/4	1 1/4	2 1/16	3 1/4	1/4-28
GSCC-137-100	GSCC-137-100-S	1 3/8	1	2 1/2	3 5/8	1/4-28
GSCC-137-137	GSCC-137-137-S	1 3/8	1 3/8	2 1/2	3 5/8	1/4-28
GSCC-150-100	GSCC-150-100-S	1 1/2	1	2 5/8	3 7/8	5/16-24
GSCC-150-150	GSCC-150-150-S	1 1/2	1 1/2	2 5/8	3 7/8	5/16-24
GSCC-175-175		1 3/4	1 3/4	3 1/8	4 1/2	5/16-24
GSCC-200-200	GSCC-200-200-S	2	2	3 3/8	4 7/8	3/8-24

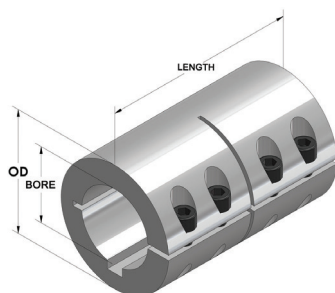
GSCC-KW-SERIES

ONE-PIECE WITH KEYWAY

High axial load and torque capacity

Does not mar the shaft

Other sizes and materials available



PART NUMBER		PRODUCT SPECIFICATIONS						
BLACK OXIDE STEEL	STAINLESS STEEL	BORE SIZE	2ND BORE SIZE	OD	LENGTH	CLAMP SCREW	KEYWAY SIZE	2ND KEYWAY SIZE
GSCC-037-037-KW	GSCC-037-037SKW	3/8	3/8	7/8	1 3/8	6-32	3/32	3/32
GSCC-050-050-KW	GSCC-050-050SKW	1/2	1/2	1 1/8	1 3/4	8-32	1/8	1/8
GSCC-062-062-KW	GSCC-062-062SKW	5/8	5/8	1 5/16	2	10-32	3/16	3/16
GSCC-075-075-KW	GSCC-075-075SKW	3/4	3/4	1 1/2	2 1/4	1/4-28	3/16	3/16
GSCC-087-087-KW	GSCC-087-087SKW	7/8	7/8	1 5/8	2 1/2	1/4-28	3/16	3/16
GSCC-100-100-KW	GSCC-100-100SKW	1	1	1 3/4	3	1/4-28	1/4	1/4
GSCC-112-112-KW	GSCC-112-112SKW	1 1/8	1 1/8	1 7/8	3 1/8	1/4-28	1/4	1/4
GSCC-125-125-KW	GSCC-125-125SKW	1 1/4	1 1/4	2 1/16	3 1/4	1/4-28	1/4	1/4
GSCC-137-137-KW		1 3/8	1 3/8	2 1/2	3 5/8	1/4-28	5/16	5/16
GSCC-150-150-KW	GSCC-150-150SKW	1 1/2	1 1/2	2 5/8	3 7/8	1/4-28	3/8	3/8
GSCC-175-175-KW		1 3/4	1 3/4	3 1/8	4 1/2	3/8-24	3/8	3/8
GSCC-200-200-KW	GSCC-200-200SKW	2	2	3 3/8	4 7/8	3/8-24	1/2	1/2