



- Load capacity is nearly doubled by adding a second screw
- Holes are at 90°

Two - Hole Set Screw Collars - C-2H-Series

Black Oxide Steel	Bore Size	OD	Width	2 Screws @ 90°	Box Qty	Approx. Weight (oz.)
C-025-2H @ 90°	1/4	1/2	5/16	10-32 x 1/8	100	0.20
C-037-2H @ 90°	3/8	3/4	3/8	1/4-20 x 3/16	50	0.50
C-050-2H @ 90°	1/2	1	7/16	1/4-20 x 1/4	50	1.10
C-062-2H @ 90°	5/8	1 1/8	1/2	5/16-18 x 1/4	50	1.50
C-075-2H @ 90°	3/4	1 1/4	9/16	5/16-18 x 1/4	25	1.90
C-100-2H @ 90°	1	1 1/2	5/8	5/16-24 x 1/4	25	2.78
C-125-2H @ 90°	1 1/4	2	11/16	3/8-16 x 3/8	25	5.70
C-150-2H @ 90°	1 1/2	2 1/4	3/4	3/8-16 x 3/8	25	7.20
C-200-2H @ 90°	2	3	7/8	1/2-13 x 1/2	10	14.90



- Will not rust or corrode
- Ideal for wash down environments and USDA approved
- Collars include stainless steel screws

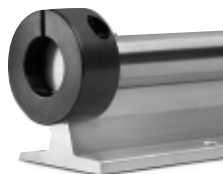
Acetal Set Screw Collars - NC-Series

Acetal	Bore Size	OD	Width	Set Screw	Box Qty	Approx. Weight (oz.)
NC-025	1/4	5/8	3/8	10-32 x 1/8	20	0.04
NC-031	5/16	5/8	3/8	10-32 x 3/16	20	0.06
NC-037	3/8	3/4	7/16	1/4-20 x 3/16	20	0.10
NC-050	1/2	1	7/16	1/4-20 x 1/4	20	0.23
NC-062	5/8	1 1/8	1/2	1/4-20 x 1/4	20	0.30
NC-075	3/4	1 1/4	9/16	5/16-18 x 1/4	20	0.38
NC-087	7/8	1 3/8	9/16	5/16-18 x 5/16	20	0.55
NC-100	1	1 5/8	5/8	5/16-18 x 5/16	20	0.60



Acetal Two-Piece Clamping Collars - N2C-Series

Acetal	Bore Size	OD	Width	Set Screw	Box Qty	Approx. Weight (oz.)
N2C-025	1/4	5/8	5/16	4-40 x 3/8	20	0.22
N2C-037	3/8	7/8	11/32	6-32 x 3/8	20	0.38
N2C-050	1/2	1 1/8	13/32	8-32 x 1/2	20	0.62
N2C-062	5/8	1 5/16	7/16	10-32 x 1/2	20	0.88
N2C-075	3/4	1 1/2	1/2	1/4-28 x 5/8	20	1.30
N2C-100	1	1 3/4	1/2	1/4-28 x 5/8	20	1.85



- Fits over rail assembly on precision shafting

End Stop Collars - ESC-Series

Black Oxide Steel	Stainless Steel	Bore Size	OD	Width	Clamp Screw	Approx. Weight (oz.)
ESC-050	ESC-050-S	1/2	1 3/8	3/4	8-32 x 5/8	3.57
ESC-062	ESC-062-S	5/8	1 1/2	3/4	10-32 x 5/8	3.97
ESC-075	ESC-075-S	3/4	1 3/4	7/8	1/4-28 x 5/8	6.29
ESC-100	ESC-100-S	1	2	7/8	1/4-28 x 5/8	7.81
ESC-125	ESC-125-S	1 1/4	2 1/2	1	1/4-28 x 5/8	14.05
ESC-150	ESC-150-S	1 1/2	2 3/4	1	1/4-28 x 5/8	16.96