

TWO-PIECE CLAMPING COLLARS 2C-SERIES



- Easily installed where major disassembly would otherwise be required
- Design fully engages the shaft without marring
- Greater axial holding power than set screw or one-piece collars
- Effective on both hard and soft shafts

PART NUMBER						PRODUCT SPECIFICATIONS				
BLACK OXIDE STEEL	STAINLESS STEEL	ALUMINUM	ZINC PLATED STEEL	YELLOW ZINC	316 STAINLESS STEEL	BORE	OD	WIDTH	SCREW SIZE	APPROX WEIGHT (OZ)
2C-012	2C-012-S	2C-012-A	2C-012-Z		CR2C-012-S	1/8	11/16	5/16	4-40 x 3/8	0.43
2C-018	2C-018-S	2C-018-A	2C-018-Z		CR2C-018-S	3/16	11/16	5/16	4-40 x 3/8	0.39
2C-025	2C-025-S	2C-025-A	2C-025-Z		CR2C-025-S	1/4	11/16	5/16	4-40 x 3/8	0.38
2C-031	2C-031-S	2C-031-A	2C-031-Z		CR2C-031-S	5/16	11/16	5/16	4-40 x 3/8	0.34
2C-037	2C-037-S	2C-037-A	2C-037-Z		CR2C-037-S	3/8	7/8	3/8	6-32 x 3/8	0.71
2C-043	2C-043-S	2C-043-A	2C-043-Z		CR2C-043-S	7/16	15/16	3/8	6-32 x 3/8	0.76
2C-050	2C-050-S	2C-050-A	2C-050-Z	CR2C-050	CR2C-050-S	1/2	1 1/8	13/32	8-32 x 1/2	1.26
2C-056	2C-056-S	2C-056-A	2C-056-Z		CR2C-056-S	9/16	1 5/16	7/16	10-32 x 1/2	2.00
2C-062	2C-062-S	2C-062-A	2C-062-Z	CR2C-062	CR2C-062-S	5/8	1 5/16	7/16	10-32 x 1/2	1.80
2C-068	2C-068-S	2C-068-A	2C-068-Z		CR2C-068-S	11/16	1 1/2	1/2	10-32 x 1/2	2.80
2C-075	2C-075-S	2C-075-A	2C-075-Z	CR2C-075	CR2C-075-S	3/4	1 1/2	1/2	1/4-28 x 5/8	2.60
2C-081	2C-081-S	2C-081-A	2C-081-Z		CR2C-081-S	13/16	1 5/8	1/2	1/4-28 x 5/8	3.10
2C-087	2C-087-S	2C-087-A	2C-087-Z		CR2C-087-S	7/8	1 5/8	1/2	1/4-28 x 5/8	2.83
2C-093	2C-093-S	2C-093-A	2C-093-Z		CR2C-093-S	15/16	1 3/4	1/2	1/4-28 x 5/8	3.40
2C-100	2C-100-S	2C-100-A	2C-100-Z	CR2C-100	CR2C-100-S	1	1 3/4	1/2	1/4-28 x 5/8	3.10
2C-106	2C-106-S	2C-106-A	2C-106-Z		CR2C-106-S	1 1/16	1 7/8	1/2	1/4-28 x 5/8	3.67
2C-112	2C-112-S	2C-112-A	2C-112-Z		CR2C-112-S	1 1/8	1 7/8	1/2	1/4-28 x 3/4	3.50
2C-118	2C-118-S	2C-118-A	2C-118-Z		CR2C-118-S	1 3/16	2 1/16	1/2	1/4-28 x 3/4	4.50
2C-125	2C-125-S	2C-125-A	2C-125-Z	CR2C-125	CR2C-125-S	1 1/4	2 1/16	1/2	1/4-28 x 3/4	4.22
2C-131	2C-131-S	2C-131-A	2C-131-Z		CR2C-131-S	1 5/16	2 1/4	9/16	1/4-28 x 3/4	5.90
2C-137	2C-137-S	2C-137-A	2C-137-Z		CR2C-137-S	1 3/8	2 1/4	9/16	1/4-28 x 3/4	5.70
2C-143	2C-143-S	2C-143-A	2C-143-Z		CR2C-143-S	1 7/16	2 1/4	9/16	1/4-28 x 3/4	5.23
2C-150	2C-150-S	2C-150-A	2C-150-Z		CR2C-150-S	1 1/2	2 3/8	9/16	1/4-28 x 3/4	6.06
2C-156	2C-156-S	2C-156-A	2C-156-Z		CR2C-156-S	1 9/16	2 3/8	9/16	1/4-28 x 3/4	5.61
2C-162	2C-162-S	2C-162-A	2C-162-Z		CR2C-162-S	1 5/8	2 5/8	11/16	5/16-24 x 1	9.31
2C-168	2C-168-S	2C-168-A	2C-168-Z		CR2C-168-S	1 11/16	2 3/4	11/16	5/16-24 x 1	9.86
2C-175	2C-175-S	2C-175-A	2C-175-Z		CR2C-175-S	1 3/4	2 3/4	11/16	5/16-24 x 1	11.00
2C-181	2C-181-S	2C-181-A	2C-181-Z		CR2C-181-S	1 13/16	2 7/8	11/16	5/16-24 x 1	10.90
2C-187	2C-187-S	2C-187-A	2C-187-Z		CR2C-187-S	1 7/8	2 7/8	11/16	5/16-24 x 1	10.46
2C-193	2C-193-S	2C-193-A	2C-193-Z		CR2C-193-S	1 15/16	3	11/16	5/16-24 x 1	11.57
2C-200	2C-200-S	2C-200-A	2C-200-Z		CR2C-200-S	2	3	11/16	5/16-24 x 1	11.00
2C-206	2C-206-S	2C-206-A	2C-206-Z		CR2C-206-S	2 1/16	3 1/4	3/4	5/16-24 x 1	11.00
2C-212	2C-212-S	2C-212-A	2C-212-Z		CR2C-212-S	2 1/8	3 1/4	3/4	5/16-24 x 1	15.00
2C-218	2C-218-S	2C-218-A	2C-218-Z		CR2C-218-S	2 3/16	3 1/4	3/4	5/16-24 x 1	14.00
2C-225	2C-225-S	2C-225-A	2C-225-Z		CR2C-225-S	2 1/4	3 1/4	3/4	5/16-24 x 1	13.10
2C-231	2C-231-S	2C-231-A	2C-231-Z		CR2C-231-S	2 5/16	3 1/2	3/4	5/16-24 x 1	15.90
2C-237	2C-237-S	2C-237-A	2C-237-Z		CR2C-237-S	2 3/8	3 1/2	3/4	5/16-24 x 1	15.20
2C-243	2C-243-S	2C-243-A	2C-243-Z		CR2C-243-S	2 7/16	3 1/2	3/4	5/16-24 x 1	15.30
2C-250	2C-250-S	2C-250-A	2C-250-Z		CR2C-250-S	2 1/2	3 3/4	7/8	3/8-24 x 1	22.30
2C-256	2C-256-S	2C-256-A	2C-256-Z		CR2C-256-S	2 9/16	3 7/8	7/8	3/8-24 x 1	24.00
2C-262	2C-262-S	2C-262-A	2C-262-Z		CR2C-262-S	2 5/8	3 7/8	7/8	3/8-24 x 1	24.00
2C-268	2C-268-S	2C-268-A	2C-268-Z		CR2C-268-S	2 11/16	4	7/8	3/8-24 x 1	25.00
2C-275	2C-275-S	2C-275-A	2C-275-Z		CR2C-275-S	2 3/4	4	7/8	3/8-24 x 1	24.00
2C-281	2C-281-S	2C-281-A	2C-281-Z		CR2C-281-S	2 13/16	4 1/4	7/8	3/8-24 x 1	29.20
2C-287	2C-287-S	2C-287-A	2C-287-Z		CR2C-287-S	2 7/8	4 1/4	7/8	3/8-24 x 1	29.00
2C-293	2C-293-S	2C-293-A	2C-293-Z		CR2C-293-S	2 15/16	4 1/4	7/8	3/8-24 x 1	26.50
2C-300	2C-300-S	2C-300-A	2C-300-Z		CR2C-300-S	3	4 1/4	7/8	3/8-24 x 1	25.80
H2C-318	H2C-318-S					3 3/16	4 1/2	7/8	3/8-24 x 1	28.30
H2C-325	H2C-325-S					3 1/4	4 1/2	7/8	3/8-24 x 1	27.30
H2C-337	H2C-337-S					3 3/8	4 3/4	7/8	3/8-24 x 1	29.00
H2C-343	H2C-343-S					3 7/16	4 3/4	7/8	3/8-24 x 1	31.00
H2C-350	H2C-350-S					3 1/2	4 3/4	7/8	3/8-24 x 1	29.10
H2C-375	H2C-375-S					3 3/4	5	7/8	3/8-24 x 1	32.00
H2C-393	H2C-393-S					3 15/16	5 1/4	7/8	3/8-24 x 1	35.00
H2C-400	H2C-400-S					4	5 1/4	7/8	3/8-24 x 1	33.00
H2C-425	H2C-425-S					4 1/4	5 1/2	7/8	3/8-24 x 1	35.00
H2C-443	H2C-443-S					4 7/16	5 3/4	7/8	3/8-24 x 1	38.50
H2C-450	H2C-450-S					4 1/2	5 3/4	7/8	3/8-24 x 1	36.00
H2C-493	H2C-493-S					4 15/16	6 1/4	7/8	3/8-24 x 1	42.50
H2C-500	H2C-500-S					5	6 1/4	7/8	3/8-24 x 1	40.10
H2C-525	H2C-525-S					5 1/4	6 3/4	7/8	3/8-24 x 1	42.00
H2C-550	H2C-550-S					5 1/2	6 3/4	7/8	3/8-24 x 1	43.30
H2C-593	H2C-593-S					5 15/16	7 1/4	7/8	3/8-24 x 1	50.30
H2C-600	H2C-600-S					6	7 1/4	7/8	3/8-24 x 1	47.60

Screw lengths for steel parts only

Bore sizes 3-3/16" through 6" do not have recessed screws

Zinc plated collars have stainless steel screws

Yellow zinc plated collars have black oxide screws

DIMENSION

BORE, INCH

TOLERANCE

+0.003 / -0.000



For 3D Models & 2D Sales Drawings

METRIC TWO-PIECE CLAMPING COLLARS **M2C-SERIES**



- Easily installed where major disassembly would otherwise be required
- Design fully engages the shaft without marring
- Greater axial holding power than set screw or one-piece collars
- Effective on both hard and soft shafts

PART NUMBER		PRODUCT SPECIFICATIONS				
BLACK OXIDE STEEL	STAINLESS STEEL	BORE	OD (IN)	WIDTH	SCREW SIZE	APPROX WEIGHT (OZ)
M2C-03	M2C-03-S	3	11/16	9	M 3 x 8	0.40
M2C-04	M2C-04-S	4	11/16	9	M 3 x 8	0.40
M2C-05	M2C-05-S	5	11/16	9	M 3 x 8	0.40
M2C-06	M2C-06-S	6	3/4	9	M 3 x 8	0.46
M2C-07	M2C-07-S	7	3/4	9	M 3 x 8	0.43
M2C-08	M2C-08-S	8	1	9	M 3 x 10	0.90
M2C-09	M2C-09-S	9	1	9	M 3 x 10	0.81
M2C-10	M2C-10-S	10	1	9	M 3 x 10	0.80
M2C-12	M2C-12-S	12	1 1/8	11	M 4 x 12	1.31
M2C-13	M2C-13-S	13	1 1/4	11	M 4 x 12	1.50
M2C-14	M2C-14-S	14	1 1/4	11	M 4 x 12	1.50
M2C-15	M2C-15-S	15	1 3/8	13	M 5 x 16	2.30
M2C-16	M2C-16-S	16	1 3/8	13	M 5 x 16	2.25
M2C-17	M2C-17-S	17	1 1/2	13	M 5 x 16	2.60
M2C-18	M2C-18-S	18	1 1/2	13	M 5 x 16	2.40
M2C-19	M2C-19-S	19	1 5/8	15	M 6 x 16	3.61
M2C-20	M2C-20-S	20	1 5/8	15	M 6 x 16	3.41
M2C-21	M2C-21-S	21	1 3/4	15	M 6 x 16	3.90
M2C-22	M2C-22-S	22	1 3/4	15	M 6 x 16	3.71
M2C-23	M2C-23-S	23	1 7/8	15	M 6 x 16	4.45
M2C-24	M2C-24-S	24	1 7/8	15	M 6 x 16	4.20
M2C-25	M2C-25-S	25	1 7/8	15	M 6 x 16	4.80
M2C-26	M2C-26-S	26	2	15	M 6 x 16	4.00
M2C-28	M2C-28-S	28	2	15	M 6 x 16	4.40
M2C-30	M2C-30-S	30	2 1/8	15	M 6 x 16	5.90
M2C-32	M2C-32-S	32	2 1/8	15	M 6 x 16	5.50
M2C-34	M2C-34-S	34	2 1/4	15	M 6 x 16	6.11
M2C-35	M2C-35-S	35	2 1/4	15	M 6 x 16	5.90
M2C-36	M2C-36-S	36	2 1/4	15	M 6 x 16	5.70
M2C-38	M2C-38-S	38	2 3/8	15	M 6 x 16	6.31
M2C-40	M2C-40-S	40	2 3/8	15	M 6 x 16	5.70
M2C-42	M2C-42-S	42	2 7/8	19	M 8 x 25	13.50
M2C-45	M2C-45-S	45	2 7/8	19	M 8 x 25	12.50
M2C-48	M2C-48-S	48	3 1/8	19	M 8 x 25	14.10
M2C-50	M2C-50-S	50	3 1/8	19	M 8 x 25	13.50
M2C-54	M2C-54-S	54	3 1/4	19	M 8 x 25	14.30
M2C-55	M2C-55-S	55	3 1/4	19	M 8 x 25	14.00
M2C-60	M2C-60-S	60	3 1/2	19	M 8 x 25	15.50
M2C-65	M2C-65-S	65	3 3/4	19	M 8 x 25	16.70
M2C-70	M2C-70-S	70	4	19	M 8 x 25	17.70
M2C-75	M2C-75-S	75	4 1/4	19	M 8 x 25	18.80
M2C-80	M2C-80-S	80	4 1/4	19	M 8 x 25	19.70
BLACK OXIDE STEEL	STAINLESS STEEL	BORE	OD (MM)	WIDTH	SCREW SIZE	APPROX WEIGHT (OZ)
M2C-85	M2C-85-S	85	125	25	M 10 X 30	45.62
M2C-90	M2C-90-S	90	130	25	M 10 X 30	47.79
M2C-95	M2C-95-S	95	135	25	M 10 X 30	49.97
M2C-100	M2C-100-S	100	140	25	M 10 X 30	52.14
M2C-110	M2C-110-S	110	150	25	M 10 X 30	56.48
M2C-120	M2C-120-S	120	160	25	M 10 X 30	60.83
M2C-125	M2C-125-S	125	165	25	M 10 X 30	63.00
M2C-130	M2C-130-S	130	170	25	M 10 X 30	65.17
M2C-140	M2C-140-S	140	180	25	M 10 X 30	69.52
M2C-150	M2C-150-S	150	190	25	M 10 X 30	73.86

DIMENSION
BORE, INCH

TOLERANCE
+0.08MM / -0.00MM

For 3D
Models &
2D Sales
Drawings



TWO-PIECE CLAMPING COLLARS RECESSED SCREW H2C-SERIES



- Recessed screw head provides an outside surface free of major projections for safety
- Easily installed where major disassembly would otherwise be required
- Design fully engages the shaft without marring
- Effective on both hard and soft shafts

PART NUMBER		PRODUCT SPECIFICATIONS				
BLACK OXIDE STEEL	STAINLESS STEEL	BORE	OD	WIDTH	SCREW SIZE	APPROX WEIGHT (OZ)
H2C-012	H2C-012-S	1/8	13/16	1/4	4-40 x 3/8	0.48
H2C-018	H2C-018-S	3/16	13/16	1/4	4-40 x 3/8	0.44
H2C-025	H2C-025-S	1/4	13/16	1/4	4-40 x 3/8	0.42
H2C-031	H2C-031-S	5/16	13/16	1/4	4-40 x 3/8	0.40
H2C-037	H2C-037-S	3/8	1 1/16	5/16	6-32 x 3/8	0.89
H2C-043	H2C-043-S	7/16	1 1/16	5/16	6-32 x 3/8	0.83
H2C-050	H2C-050-S	1/2	1 1/4	3/8	8-32 x 1/2	1.45
H2C-056	H2C-056-S	9/16	1 1/4	3/8	8-32 x 1/2	1.41
H2C-062	H2C-062-S	5/8	1 1/2	13/32	10-32 x 1/2	2.20
H2C-068	H2C-068-S	11/16	1 1/2	13/32	10-32 x 1/2	2.10
H2C-075	H2C-075-S	3/4	1 3/4	1/2	1/4-28 x 5/8	3.60
H2C-081	H2C-081-S	13/16	1 3/4	1/2	1/4-28 x 5/8	3.50
H2C-087	H2C-087-S	7/8	1 7/8	1/2	1/4-28 x 5/8	4.10
H2C-093	H2C-093-S	15/16	1 7/8	1/2	1/4-28 x 5/8	3.90
H2C-100	H2C-100-S	1	2	1/2	1/4-28 x 5/8	4.50
H2C-106	H2C-106-S	1 1/16	2	1/2	1/4-28 x 5/8	4.30
H2C-112	H2C-112-S	1 1/8	2 1/8	1/2	1/4-28 x 3/4	5.00
H2C-118	H2C-118-S	1 3/16	2 1/8	1/2	1/4-28 x 3/4	4.70
H2C-125	H2C-125-S	1 1/4	2 1/4	1/2	1/4-28 x 3/4	5.30
H2C-131	H2C-131-S	1 5/16	2 1/4	1/2	1/4-28 x 3/4	5.00
H2C-137	H2C-137-S	1 3/8	2 3/8	1/2	1/4-28 x 3/4	5.80
H2C-143	H2C-143-S	1 7/16	2 3/8	1/2	1/4-28 x 3/4	5.50
H2C-150	H2C-150-S	1 1/2	2 1/2	1/2	1/4-28 x 3/4	6.20
H2C-156	H2C-156-S	1 9/16	2 1/2	1/2	1/4-28 x 3/4	5.80
H2C-162	H2C-162-S	1 5/8	3	5/8	5/16-24 x 1	12.50
H2C-168	H2C-168-S	1 11/16	3	5/8	5/16-24 x 1	12.10
H2C-175	H2C-175-S	1 3/4	3	5/8	5/16-24 x 1	11.50
H2C-187	H2C-187-S	1 7/8	3 1/4	5/8	5/16-24 x 1	13.80
H2C-193	H2C-193-S	1 15/16	3 1/4	5/8	5/16-24 x 1	13.40
H2C-200	H2C-200-S	2	3 1/4	5/8	5/16-24 x 1	12.70
H2C-212	H2C-212-S	2 1/8	3 1/2	5/8	5/16-24 x 1	15.00
H2C-218	H2C-218-S	2 3/16	3 1/2	5/8	5/16-24 x 1	14.60
H2C-225	H2C-225-S	2 1/4	3 1/2	5/8	5/16-24 x 1	14.00
H2C-237	H2C-237-S	2 3/8	3 1/2	5/8	5/16-24 x 1	13.40
H2C-243	H2C-243-S	2 7/16	4	3/4	3/8-24 x 1	12.90
H2C-250	H2C-250-S	2 1/2	4	3/4	3/8-24 x 1	22.80
H2C-262	H2C-262-S	2 5/8	4 1/4	3/4	3/8-24 x 1	26.60
H2C-268	H2C-268-S	2 11/16	4 1/4	3/4	3/8-24 x 1	26.00
H2C-275	H2C-275-S	2 3/4	4 1/4	3/4	3/8-24 x 1	25.10
H2C-287	H2C-287-S	2 7/8	4 1/2	3/4	3/8-24 x 1	29.00
H2C-293	H2C-293-S	2 15/16	4 1/2	3/4	3/8-24 x 1	28.00
H2C-300	H2C-300-S	3	4 1/2	3/4	3/8-24 x 1	26.60
H2C-318	H2C-318-S	3 3/16	4 1/2	7/8	3/8-24 x 1	28.30
H2C-325	H2C-325-S	3 1/4	4 1/2	7/8	3/8-24 x 1	27.30
H2C-337	H2C-337-S	3 3/8	4 3/4	7/8	3/8-24 x 1	29.00
H2C-343	H2C-343-S	3 7/16	4 3/4	7/8	3/8-24 x 1	31.00
H2C-350	H2C-350-S	3 1/2	4 3/4	7/8	3/8-24 x 1	29.10
H2C-375	H2C-375-S	3 3/4	5	7/8	3/8-24 x 1	32.00
H2C-393	H2C-393-S	3 15/16	5 1/4	7/8	3/8-24 x 1	35.00
H2C-400	H2C-400-S	4	5 1/4	7/8	3/8-24 x 1	33.00
H2C-425	H2C-425-S	4 1/4	5 1/2	7/8	3/8-24 x 1	35.00
H2C-443	H2C-443-S	4 7/16	5 3/4	7/8	3/8-24 x 1	38.50
H2C-450	H2C-450-S	4 1/2	5 3/4	7/8	3/8-24 x 1	36.00
H2C-493	H2C-493-S	4 15/16	6 1/4	7/8	3/8-24 x 1	42.50
H2C-500	H2C-500-S	5	6 1/4	7/8	3/8-24 x 1	40.10
H2C-525	H2C-525-S	5 1/4	6 3/4	7/8	3/8-24 x 1	42.00
H2C-550	H2C-550-S	5 1/2	6 3/4	7/8	3/8-24 x 1	43.30
H2C-593	H2C-593-S	5 15/16	7 1/4	7/8	3/8-24 x 1	50.30
H2C-600	H2C-600-S	6	7 1/4	7/8	3/8-24 x 1	47.60

Bore sizes 3-3/16" through 6" do not have recessed screws

DIMENSION

BORE, INCH

TOLERANCE

+0.003 / -0.000



For 3D Models & 2D Sales Drawings

ACETAL TWO-PIECE CLAMPING COLLARS **N2C-SERIES**



- Ideal for wash down environments, will not rust or corrode
- USDA approved
- Easily installed where major disassembly would otherwise be required



For 3D
Models &
2D Sales
Drawings

DIMENSION
BORE, INCH

TOLERANCE
+0.003 / -0.000

PART NUMBER	PRODUCT SPECIFICATIONS					
	ACETAL	BORE	OD	WIDTH	SCREW SIZE	APPROX WEIGHT (OZ)
N2C-025		1/4	5/8	5/16	4-40 x 3/8	0.22
N2C-037		3/8	7/8	11/32	6-32 x 3/8	0.38
N2C-050		1/2	1 1/8	13/32	8-32 x 1/2	0.62
N2C-062		5/8	1 5/16	7/16	10-32 x 1/2	0.88
N2C-075		3/4	1 1/2	1/2	1/4-28 x 5/8	1.30
N2C-100		1	1 3/4	1/2	1/4-28 x 5/8	1.85

Acetal collars include stainless steel screws

TWO-PIECE CLAMPING COLLARS DOUBLE WIDE **D2C-SERIES**



- Ideal for space constrained applications
- High axial load capacity
- Easily installed where major disassembly would otherwise be required
- Design fully engages the shaft without marring
- Effective on both hard and soft shafts



For 3D
Models &
2D Sales
Drawings

DIMENSION
BORE, INCH

TOLERANCE
+0.003 / -0.000

PART NUMBER			PRODUCT SPECIFICATIONS				
BLACK OXIDE STEEL	STAINLESS STEEL	ALUMINUM	BORE	OD	WIDTH	SCREW SIZE	APPROX WEIGHT (OZ)
D2C-012	D2C-012-S	D2C-012-A	1/8	11/16	5/8	4-40 x 3/8	0.87
D2C-018	D2C-018-S	D2C-018-A	3/16	11/16	5/8	4-40 x 3/8	0.79
D2C-025	D2C-025-S	D2C-025-A	1/4	11/16	5/8	4-40 x 3/8	0.77
D2C-031	D2C-031-S	D2C-031-A	5/16	11/16	5/8	4-40 x 3/8	0.69
D2C-037	D2C-037-S	D2C-037-A	3/8	7/8	3/4	6-32 x 3/8	1.44
D2C-050	D2C-050-S	D2C-050-A	1/2	1 1/8	7/8	8-32 x 1/2	2.54
D2C-062	D2C-062-S	D2C-062-A	5/8	1 5/16	15/16	10-32 x 1/2	3.64
D2C-075	D2C-075-S	D2C-075-A	3/4	1 1/2	1 1/16	1/4-28 x 5/8	5.24
D2C-087	D2C-087-S	D2C-087-A	7/8	1 5/8	1 1/16	1/4-28 x 5/8	5.69
D2C-100	D2C-100-S	D2C-100-A	1	1 3/4	1 1/16	1/4-28 x 5/8	6.24

TWO-PIECE CLAMPING COLLARS WITH KEYWAY **2C-KW-SERIES**



- For use on keyed shafts
- Easily installed where major disassembly would otherwise be required
- Design fully engages the shaft without marring
- Greater axial holding power than set screw or one-piece collars
- Effective on both hard and soft shafts



For 3D
Models &
2D Sales
Drawings

DIMENSION
BORE, INCH

TOLERANCE
+0.003 / -0.000

PART NUMBER			PRODUCT SPECIFICATIONS					
BLACK OXIDE STEEL	STAINLESS STEEL	ALUMINUM	BORE	OD	WIDTH	SCREW SIZE	KEYWAY SIZE	APPROX WEIGHT (OZ)
2C-037-KW	2C-037-S-KW	2C-037-A-KW	3/8	7/8	3/8	6-32 x 3/8	3/32	0.71
2C-050-KW	2C-050-S-KW	2C-050-A-KW	1/2	1 1/8	13/32	8-32 x 1/2	1/8	1.26
2C-062-KW	2C-062-S-KW	2C-062-A-KW	5/8	1 5/16	7/16	10-32 x 1/2	3/16	1.80
2C-075-KW	2C-075-S-KW	2C-075-A-KW	3/4	1 1/2	1/2	1/4-28 x 5/8	3/16	2.60
2C-100-KW	2C-100-S-KW	2C-100-A-KW	1	1 3/4	1/2	1/4-28 x 5/8	1/4	3.10
2C-125-KW	2C-125-S-KW	2C-125-A-KW	1 1/4	2 1/16	1/2	1/4-28 x 3/4	1/4	4.22
2C-150-KW	2C-150-S-KW	2C-150-A-KW	1 1/2	2 3/8	9/16	1/4-28 x 3/4	3/8	6.04
2C-200-KW	2C-200-S-KW	2C-200-A-KW	2	3	11/16	5/16-24 x 1	1/2	10.97
2C-218-KW	2C-218-S-KW	2C-218-A-KW	2 3/16	3 1/4	3/4	5/16-24 x 1	1/2	13.96

RE-MACHINABLE TWO-PIECE CLAMPING COLLARS R2C-SERIES

PART NUMBER				PRODUCT SPECIFICATIONS					
UNPLATED STEEL	BLACK OXIDE STEEL	STAINLESS STEEL	ALUMINUM	PILOT BORE	MAX BORE	OD	WIDTH	SCREW SIZE	APPROX WEIGHT (OZ)
R2C-075-DT	R2C-075	R2C-075-S	R2C-075-A	1/8	3/4	1 3/4	1/2	1/4-28 x 5/8	6.40
R2C-100-DT	R2C-100		R2C-100-A	1/2	1	2 1/4	1/2	1/4-28 x 5/8	9.60
R2C-156-DT	R2C-156	R2C-156-S		5/8	1 9/16	2 1/2	1/2	1/4-28 x 3/4	11.20
R2C-200-DT	R2C-200	R2C-200-S	R2C-200-A	3/4	2	3 1/4	5/8	5/16-24 x 1	24.00
	R2C-262			1	2 5/8	4 1/4	3/4	3/8-24 x 1	48.00
	R2C-300			1 1/4	3	4 1/2	3/4	3/8-24 x 1	51.20
		R2C-425-S	R2C-425-A	2	4 1/4	5 1/2	7/8	3/8-24 x 1	84.80
		R2C-500-S		2 1/2	5	6 1/4	7/8	3/8-24 x 1	105.60

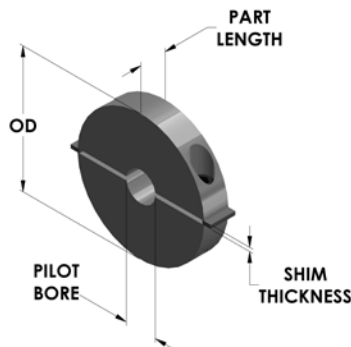


- Collar designed with an undersized ID
- Allows for rebores of the ID without damaging the existing clamp screws
- Pilot bore can be opened safely to the nominal ID reflected in the part number
- Easily installed where major disassembly would otherwise be required
- Design fully engages the shaft without marring

When rebores the R2C-Series Collars:

1. Start by inserting the shims in the saw cuts of the collar as illustrated. Shim thickness is provided in the chart below.

PILOT BORE (IN)	MAX BORE (IN)	OD (IN)	WIDTH (IN)	SHIM THICKNESS (IN)
1/8	3/4	1 3/4	1/2	0.063
1/2	1	2 1/4	1/2	0.063
5/8	1 9/16	2 1/2	1/2	0.093
3/4	2	3 1/4	5/8	0.093
1	2 5/8	4 1/4	3/4	0.125
1 1/4	3	4 1/2	3/4	0.125
2	4 1/4	5 1/2	7/8	0.125
2 1/2	5	6 1/4	7/8	0.125
3	6	7 1/4	7/8	0.125



- Tighten the clamp screws so that the collar clamps down on the shims.
- The collar bore is then machined with the installation screws tightened and the shims on both sides holding the two halves of the collar apart.

DIMENSION
BORE, INCH
TOLERANCE
+0.003 / -0.000

For 3D Models & 2D Sales Drawings



SHAFT MOUNT COLLARS 2SMC-SERIES 2SMC-SERIES

PART NUMBER			PRODUCT SPECIFICATIONS					
BLACK OXIDE STEEL	STAINLESS STEEL	ALUMINUM	BORE	OD	WIDTH	ACROSS FLATS	SCREW SIZE	APPROX WEIGHT (OZ)
2SMC-025	2SMC-025-S	2SMC-025-A	1/4	11/16	5/16	9/16	4-40 X 3/8	0.35
2SMC-037	2SMC-037-S	2SMC-037-A	3/8	7/8	3/8	3/4	6-32 x 3/8	0.67
2SMC-050	2SMC-050-S	2SMC-050-A	1/2	1 1/8	13/32	1	8-32 x 1/2	1.28
2SMC-062	2SMC-062-S	2SMC-062-A	5/8	1 5/16	7/16	1 3/16	10-32 x 1/2	1.86
2SMC-075	2SMC-075-S	2SMC-075-A	3/4	1 1/2	1/2	1 5/16	1/4-28 x 5/8	2.72
2SMC-087	2SMC-087-S	2SMC-087-A	7/8	1 5/8	1/2	1 7/16	1/4-28 x 5/8	2.94
2SMC-100	2SMC-100-S	2SMC-100-A	1	1 3/4	1/2	1 9/16	1/4-28 x 5/8	3.26
2SMC-112	2SMC-112-S	2SMC-112-A	1 1/8	1 7/8	1/2	1 11/16	1/4-28 x 3/4	3.61
2SMC-125	2SMC-125-S	2SMC-125-A	1 1/4	2 1/16	1/2	1 7/8	1/4-28 x 3/4	4.42
2SMC-137	2SMC-137-S	2SMC-137-A	1 3/8	2 1/4	9/16	2 1/16	1/4-28 x 3/4	5.70
2SMC-150	2SMC-150-S	2SMC-150-A	1 1/2	2 3/8	9/16	2 3/16	1/4-28 x 3/4	6.21
2SMC-162	2SMC-162-S	2SMC-162-A	1 5/8	2 5/8	11/16	2 7/16	5/16-24 x 1	9.63
2SMC-175	2SMC-175-S	2SMC-175-A	1 3/4	2 3/4	11/16	2 9/16	5/16-24 x 1	10.11
2SMC-200	2SMC-200-S	2SMC-200-A	2	3	11/16	2 13/16	5/16-24 x 1	11.23



- Collars have machined flats for mounting to each other or attached precisely to flat surfaces in a repeatable manner
- Easily installed where major disassembly would otherwise be required

DIMENSION
BORE, INCH
TOLERANCE
+0.003 / -0.000

For 3D Models & 2D Sales Drawings

