

ONE-PIECE CLAMPING COLLARS 1C-SERIES



- Design fully engages the shaft without marring
- Greater axial holding power than set screw collars
- Effective on both hard and soft shafts

PART NUMBER					PRODUCT SPECIFICATIONS				
BLACK OXIDE STEEL	STAINLESS STEEL	ALUMINUM	ZINC PLATED STEEL	316 STAINLESS STEEL	BORE	OD	WIDTH	SCREW SIZE	APPROX WEIGHT (OZ)
1C-012	1C-012-S	1C-012-A	1C-012-Z	CR1C-012-S	1/8	11/16	5/16	4-40 x 3/8	0.44
1C-018	1C-018-S	1C-018-A	1C-018-Z	CR1C-018-S	3/16	11/16	5/16	4-40 x 3/8	0.43
1C-025	1C-025-S	1C-025-A	1C-025-Z	CR1C-025-S	1/4	11/16	5/16	4-40 x 3/8	0.40
1C-031	1C-031-S	1C-031-A	1C-031-Z	CR1C-031-S	5/16	11/16	5/16	4-40 x 3/8	0.36
1C-037	1C-037-S	1C-037-A	1C-037-Z	CR1C-037-S	3/8	7/8	3/8	6-32 x 3/8	0.70
1C-043	1C-043-S	1C-043-A	1C-043-Z	CR1C-043-S	7/16	15/16	3/8	6-32 x 3/8	0.81
1C-050	1C-050-S	1C-050-A	1C-050-Z	CR1C-050-S	1/2	1 1/8	13/32	8-32 x 1/2	1.30
1C-056	1C-056-S	1C-056-A	1C-056-Z	CR1C-056-S	9/16	1 5/16	7/16	10-32 x 1/2	2.00
1C-062	1C-062-S	1C-062-A	1C-062-Z	CR1C-062-S	5/8	1 5/16	7/16	10-32 x 1/2	1.80
1C-068	1C-068-S	1C-068-A	1C-068-Z	CR1C-068-S	11/16	1 1/2	1/2	10-32 x 1/2	2.90
1C-075	1C-075-S	1C-075-A	1C-075-Z	CR1C-075-S	3/4	1 1/2	1/2	1/4-28 x 5/8	2.70
1C-081	1C-081-S	1C-081-A	1C-081-Z	CR1C-081-S	13/16	1 5/8	1/2	1/4-28 x 5/8	3.20
1C-087	1C-087-S	1C-087-A	1C-087-Z	CR1C-087-S	7/8	1 5/8	1/2	1/4-28 x 5/8	2.96
1C-093	1C-093-S	1C-093-A	1C-093-Z	CR1C-093-S	15/16	1 3/4	1/2	1/4-28 x 5/8	3.51
1C-100	1C-100-S	1C-100-A	1C-100-Z	CR1C-100-S	1	1 3/4	1/2	1/4-28 x 5/8	3.30
1C-106	1C-106-S	1C-106-A	1C-106-Z	CR1C-106-S	1 1/16	1 7/8	1/2	1/4-28 x 5/8	3.90
1C-112	1C-112-S	1C-112-A	1C-112-Z	CR1C-112-S	1 1/8	1 7/8	1/2	1/4-28 x 3/4	3.63
1C-118	1C-118-S	1C-118-A	1C-118-Z	CR1C-118-S	1 3/16	2 1/16	1/2	1/4-28 x 3/4	4.70
1C-125	1C-125-S	1C-125-A	1C-125-Z	CR1C-125-S	1 1/4	2 1/16	1/2	1/4-28 x 3/4	4.40
1C-131	1C-131-S	1C-131-A	1C-131-Z	CR1C-131-S	1 5/16	2 1/4	9/16	1/4-28 x 3/4	6.19
1C-137	1C-137-S	1C-137-A	1C-137-Z	CR1C-137-S	1 3/8	2 1/4	9/16	1/4-28 x 3/4	5.90
1C-143	1C-143-S	1C-143-A	1C-143-Z	CR1C-143-S	1 7/16	2 1/4	9/16	1/4-28 x 3/4	5.50
1C-150	1C-150-S	1C-150-A	1C-150-Z	CR1C-150-S	1 1/2	2 3/8	9/16	1/4-28 x 3/4	6.30
1C-156	1C-156-S	1C-156-A	1C-156-Z	CR1C-156-S	1 9/16	2 3/8	9/16	1/4-28 x 3/4	5.90
1C-162	1C-162-S	1C-162-A	1C-162-Z	CR1C-162-S	1 5/8	2 5/8	11/16	5/16-24 x 1	9.65
1C-168	1C-168-S	1C-168-A	1C-168-Z	CR1C-168-S	1 11/16	2 3/4	11/16	5/16-24 x 1	10.70
1C-175	1C-175-S	1C-175-A	1C-175-Z	CR1C-175-S	1 3/4	2 3/4	11/16	5/16-24 x 1	10.20
1C-181	1C-181-S	1C-181-A	1C-181-Z	CR1C-181-S	1 13/16	2 7/8	11/16	5/16-24 x 1	10.20
1C-187	1C-187-S	1C-187-A	1C-187-Z	CR1C-187-S	1 7/8	2 7/8	11/16	5/16-24 x 1	10.90
1C-193	1C-193-S	1C-193-A	1C-193-Z	CR1C-193-S	1 15/16	3	11/16	5/16-24 x 1	12.00
1C-200	1C-200-S	1C-200-A	1C-200-Z	CR1C-200-S	2	3	11/16	5/16-24 x 1	11.60
1C-206	1C-206-S	1C-206-A	1C-206-Z	CR1C-206-S	2 1/16	3 1/4	3/4	5/16-24 x 1	11.60
1C-212	1C-212-S	1C-212-A	1C-212-Z	CR1C-212-S	2 1/8	3 1/4	3/4	5/16-24 x 1	15.20
1C-218	1C-218-S	1C-218-A	1C-218-Z	CR1C-218-S	2 3/16	3 1/4	3/4	5/16-24 x 1	14.40
1C-225	1C-225-S	1C-225-A	1C-225-Z	CR1C-225-S	2 1/4	3 1/4	3/4	5/16-24 x 1	13.66
1C-231	1C-231-S	1C-231-A	1C-231-Z	CR1C-231-S	2 5/16	3 1/2	3/4	5/16-24 x 1	13.66
1C-237	1C-237-S	1C-237-A	1C-237-Z	CR1C-237-S	2 3/8	3 1/2	3/4	5/16-24 x 1	16.50
1C-243	1C-243-S	1C-243-A	1C-243-Z	CR1C-243-S	2 7/16	3 1/2	3/4	5/16-24 x 1	15.60
1C-250	1C-250-S	1C-250-A	1C-250-Z	CR1C-250-S	2 1/2	3 3/4	7/8	3/8-24 x 1	23.10
1C-256	1C-256-S	1C-256-A	1C-256-Z	CR1C-256-S	2 9/16	3 7/8	7/8	3/8-24 x 1	23.10
1C-262	1C-262-S	1C-262-A	1C-262-Z	CR1C-262-S	2 5/8	3 7/8	7/8	3/8-24 x 1	23.90
1C-268	1C-268-S	1C-268-A	1C-268-Z	CR1C-268-S	2 11/16	4	7/8	3/8-24 x 1	25.80
1C-275	1C-275-S	1C-275-A	1C-275-Z	CR1C-275-S	2 3/4	4	7/8	3/8-24 x 1	29.20
1C-281	1C-281-S	1C-281-A	1C-281-Z	CR1C-281-S	2 13/16	4 1/4	7/8	3/8-24 x 1	29.20
1C-287	1C-287-S	1C-287-A	1C-287-Z	CR1C-287-S	2 7/8	4 1/4	7/8	3/8-24 x 1	29.20
1C-293	1C-293-S	1C-293-A	1C-293-Z	CR1C-293-S	2 15/16	4 1/4	7/8	3/8-24 x 1	28.00
1C-300	1C-300-S	1C-300-A	1C-300-Z	CR1C-300-S	3	4 1/4	7/8	3/8-24 x 1	26.80
H1C-318	H1C-318-S				3 3/16	4 1/2	7/8	3/8-24 x 1	28.30
H1C-325	H1C-325-S				3 1/4	4 1/2	7/8	3/8-24 x 1	27.30
H1C-343	H1C-343-S				3 7/16	4 3/4	7/8	3/8-24 x 1	31.00
H1C-350	H1C-350-S				3 1/2	4 3/4	7/8	3/8-24 x 1	29.10
H1C-393	H1C-393-S				3 15/16	5 1/4	7/8	3/8-24 x 1	35.00
H1C-400	H1C-400-S				4	5 1/4	7/8	3/8-24 x 1	33.00

Screw lengths for steel parts only

Zinc plated collars have stainless steel screws

Yellow zinc plated collars have black oxide screws

Bore sizes 1-9/16" through 3" do not have a relief cut

DIMENSION
BORE, INCH

TOLERANCE
+0.003 / -0.000



For 3D
Models &
2D Sales
Drawings

ONE-PIECE CLAMPING COLLARS RECESSED SCREW H1C-SERIES



- Recessed screw head provides an outside surface free of major projections for safety
- Design fully engages the shaft without marring
- Greater axial holding power than set screw collars
- Effective on both hard and soft shafts

PART NUMBER			PRODUCT SPECIFICATIONS				
BLACK OXIDE STEEL	STAINLESS STEEL	ALUMINUM	BORE	OD	WIDTH	SCREW SIZE	APPROX WEIGHT (OZ)
H1C-012	H1C-012-S	H1C-012-A	1/8	13/16	1/4	4-40 x 3/8	0.51
H1C-018	H1C-018-S	H1C-018-A	3/16	13/16	1/4	4-40 x 3/8	0.50
H1C-025	H1C-025-S	H1C-025-A	1/4	13/16	1/4	4-40 x 3/8	0.45
H1C-031	H1C-031-S	H1C-031-A	5/16	13/16	1/4	4-40 x 3/8	0.43
H1C-037	H1C-037-S	H1C-037-A	3/8	1 1/16	5/16	6-32 x 3/8	0.95
H1C-043	H1C-043-S	H1C-043-A	7/16	1 1/16	5/16	6-32 x 3/8	0.92
H1C-050	H1C-050-S	H1C-050-A	1/2	1 1/4	3/8	8-32 x 1/2	1.50
H1C-056	H1C-056-S	H1C-056-A	9/16	1 1/4	3/8	8-32 x 1/2	1.50
H1C-062	H1C-062-S	H1C-062-A	5/8	1 1/2	13/32	10-32 x 1/2	2.40
H1C-068	H1C-068-S	H1C-068-A	11/16	1 1/2	13/32	10-32 x 1/2	2.30
H1C-075	H1C-075-S	H1C-075-A	3/4	1 3/4	1/2	1/4-28 x 5/8	3.90
H1C-081	H1C-081-S	H1C-081-A	13/16	1 3/4	1/2	1/4-28 x 5/8	3.80
H1C-087	H1C-087-S	H1C-087-A	7/8	1 7/8	1/2	1/4-28 x 5/8	4.50
H1C-093	H1C-093-S	H1C-093-A	15/16	1 7/8	1/2	1/4-28 x 5/8	4.20
H1C-100	H1C-100-S	H1C-100-A	1	2	1/2	1/4-28 x 5/8	4.80
H1C-106	H1C-106-S	H1C-106-A	1 1/16	2	1/2	1/4-28 x 5/8	4.60
H1C-112	H1C-112-S	H1C-112-A	1 1/8	2 1/8	1/2	1/4-28 x 3/4	5.30
H1C-118	H1C-118-S	H1C-118-A	1 3/16	2 1/8	1/2	1/4-28 x 3/4	5.00
H1C-125	H1C-125-S	H1C-125-A	1 1/4	2 1/4	1/2	1/4-28 x 3/4	5.70
H1C-131	H1C-131-S	H1C-131-A	1 5/16	2 1/4	1/2	1/4-28 x 3/4	5.50
H1C-137	H1C-137-S	H1C-137-A	1 3/8	2 3/8	1/2	1/4-28 x 3/4	6.20
H1C-143	H1C-143-S	H1C-143-A	1 7/16	2 3/8	1/2	1/4-28 x 3/4	5.90
H1C-150	H1C-150-S	H1C-150-A	1 1/2	2 1/2	1/2	1/4-28 x 3/4	6.50
H1C-156	H1C-156-S	H1C-156-A	1 9/16	2 1/2	1/2	1/4-28 x 3/4	6.20
H1C-162	H1C-162-S	H1C-162-A	1 5/8	3	5/8	5/16-24 x 1	13.20
H1C-168	H1C-168-S	H1C-168-A	1 11/16	3	5/8	5/16-24 x 1	12.70
H1C-175	H1C-175-S	H1C-175-A	1 3/4	3	5/8	5/16-24 x 1	12.10
H1C-187	H1C-187-S	H1C-187-A	1 7/8	3 1/4	5/8	5/16-24 x 1	14.60
H1C-193	H1C-193-S	H1C-193-A	1 15/16	3 1/4	5/8	5/16-24 x 1	14.00
H1C-200	H1C-200-S	H1C-200-A	2	3 1/4	5/8	5/16-24 x 1	13.40
H1C-212	H1C-212-S		2 1/8	3 1/2	5/8	5/16-24 x 1	15.80
H1C-218	H1C-218-S		2 3/16	3 1/2	5/8	5/16-24 x 1	15.40
H1C-225	H1C-225-S		2 1/4	3 1/2	5/8	5/16-24 x 1	14.90
H1C-237	H1C-237-S		2 3/8	3 1/2	5/8	5/16-24 x 1	13.50
H1C-243	H1C-243-S		2 7/16	4	3/4	3/8-24 x 1	28.30
H1C-250	H1C-250-S		2 1/2	4	3/4	3/8-24 x 1	24.70
H1C-262	H1C-262-S		2 5/8	4 1/4	3/4	3/8-24 x 1	27.70
H1C-268	H1C-268-S		2 11/16	4 1/4	3/4	3/8-24 x 1	26.80
H1C-275	H1C-275-S		2 3/4	4 1/4	3/4	3/8-24 x 1	26.50
H1C-287	H1C-287-S		2 7/8	4 1/2	3/4	3/8-24 x 1	30.30
H1C-293	H1C-293-S		2 15/16	4 1/2	3/4	3/8-24 x 1	29.30
H1C-300	H1C-300-S		3	4 1/2	3/4	3/8-24 x 1	28.30
H1C-318	H1C-318-S		3 3/16	4 1/2	7/8	3/8-24 x 1	28.30
H1C-325	H1C-325-S		3 1/4	4 1/2	7/8	3/8-24 x 1	27.30
H1C-343	H1C-343-S		3 7/16	4 3/4	7/8	3/8-24 x 1	31.00
H1C-350	H1C-350-S		3 1/2	4 3/4	7/8	3/8-24 x 1	29.10
H1C-393	H1C-393-S		3 15/16	5 1/4	7/8	3/8-24 x 1	35.00
H1C-400	H1C-400-S		4	5 1/4	7/8	3/8-24 x 1	33.00

Bore sizes 3-3/16" through 4" do not have recessed screws

Black oxide steel and aluminum bore sizes 3/4" through 4" do not have a relief cut

Stainless steel bore sizes 1-9/16" through 4" do not have a relief cut

DIMENSION

BORE, INCH

TOLERANCE

+0.003 / -0.000



For 3D Models & 2D Sales Drawings

METRIC ONE-PIECE CLAMPING COLLARS **M1C-SERIES**

PART NUMBER		PRODUCT SPECIFICATIONS				
BLACK OXIDE STEEL	STAINLESS STEEL	BORE	OD	WIDTH	SCREW SIZE	APPROX WEIGHT (OZ)
M1C-03	M1C-03-S	3	11/16	9	M 3 x 8	0.40
M1C-04	M1C-04-S	4	11/16	9	M 3 x 8	0.40
M1C-05	M1C-05-S	5	11/16	9	M 3 x 8	0.41
M1C-06	M1C-06-S	6	3/4	9	M 3 x 8	0.48
M1C-07	M1C-07-S	7	3/4	9	M 3 x 8	0.47
M1C-08	M1C-08-S	8	1	9	M 3 x 10	0.90
M1C-09	M1C-09-S	9	1	9	M 3 x 10	1.00
M1C-10	M1C-10-S	10	1	9	M 3 x 10	1.36
M1C-12	M1C-12-S	12	1 1/8	11	M 4 x 12	1.40
M1C-13	M1C-13-S	13	1 1/4	11	M 4 x 12	1.60
M1C-14	M1C-14-S	14	1 1/4	11	M 4 x 12	1.60
M1C-15	M1C-15-S	15	1 3/8	13	M 5 x 16	2.41
M1C-16	M1C-16-S	16	1 3/8	13	M 5 x 16	2.30
M1C-17	M1C-17-S	17	1 1/2	13	M 5 x 16	2.60
M1C-18	M1C-18-S	18	1 1/2	13	M 5 x 16	2.50
M1C-19	M1C-19-S	19	1 5/8	15	M 6 x 16	3.70
M1C-20	M1C-20-S	20	1 5/8	15	M 6 x 16	3.60
M1C-21	M1C-21-S	21	1 3/4	15	M 6 x 16	4.00
M1C-22	M1C-22-S	22	1 3/4	15	M 6 x 16	3.90
M1C-23	M1C-23-S	23	1 7/8	15	M 6 x 16	4.60
M1C-24	M1C-24-S	24	1 7/8	15	M 6 x 16	4.30
M1C-25	M1C-25-S	25	1 7/8	15	M 6 x 16	4.20
M1C-26	M1C-26-S	26	2	15	M 6 x 16	4.90
M1C-28	M1C-28-S	28	2	15	M 6 x 16	4.50
M1C-30	M1C-30-S	30	2 1/8	15	M 6 x 16	6.11
M1C-32	M1C-32-S	32	2 1/8	15	M 6 x 16	6.02
M1C-34	M1C-34-S	34	2 1/4	15	M 6 x 16	6.20
M1C-35	M1C-35-S	35	2 1/4	15	M 6 x 16	6.13
M1C-36	M1C-36-S	36	2 1/4	15	M 6 x 16	5.90
M1C-38	M1C-38-S	38	2 3/8	15	M 6 x 16	5.90
M1C-40	M1C-40-S	40	2 3/8	15	M 6 x 16	5.90
M1C-42	M1C-42-S	42	2 7/8	19	M 8 x 25	14.00
M1C-45	M1C-45-S	45	2 7/8	19	M 8 x 25	12.90
M1C-48	M1C-48-S	48	3 1/8	19	M 8 x 25	14.80
M1C-50	M1C-50-S	50	3 1/8	19	M 8 x 25	13.80
M1C-54	M1C-54-S	54	3 1/4	19	M 8 x 25	14.90
M1C-55	M1C-55-S	55	3 1/4	19	M 8 x 25	14.50
M1C-60	M1C-60-S	60	3 1/2	19	M 8 x 25	16.20
M1C-65	M1C-65-S	65	3 3/4	19	M 8 x 25	16.80
M1C-70	M1C-70-S	70	4	19	M 8 x 25	18.30
M1C-75	M1C-75-S	75	4 1/4	19	M 8 x 25	19.50
M1C-80	M1C-80-S	80	4 1/4	19	M 8 x 25	20.40



- Design fully engages the shaft without marring
- Greater axial holding power than set screw collars
- Effective on both hard and soft shafts

Bore sizes 20mm through 80mm do not have a relief cut

DIMENSION
BORE, METRIC

TOLERANCE
+0.08MM /
-0.00MM

For 3D
Models &
2D Sales
Drawings



RE-MACHINABLE ONE-PIECE CLAMPING COLLARS **R1C-SERIES**

PART NUMBER	PRODUCT SPECIFICATIONS						
	BLACK OXIDE STEEL	PILOT BORE	MAX BORE	OD	WIDTH	SCREW SIZE	APPROX WEIGHT (OZ)
R1C-075		1/8	3/4	1 3/4	1/2	1/4-28 x 5/8	6.40
R1C-100		1/2	1	2 1/4	1/2	1/4-28 x 5/8	9.60
R1C-156		5/8	1 9/16	2 1/2	1/2	1/4-28 x 3/4	11.20
R1C-200		3/4	2	3 1/4	5/8	5/16-24 x 1	24.00
R1C-262		1	2 5/8	4 1/4	3/4	3/8-24 x 1	48.00
R1C-300		1 1/4	3	4 1/2	3/4	3/8-24 x 1	51.20
R1C-425		2	4 1/4	5 1/2	7/8	3/8-24 x 1	84.80
R1C-500		2 1/2	5	6 1/4	7/8	3/8-24 x 1	105.60
R1C-600		3	6	7 1/4	7/8	3/8-24 x 1	139.20

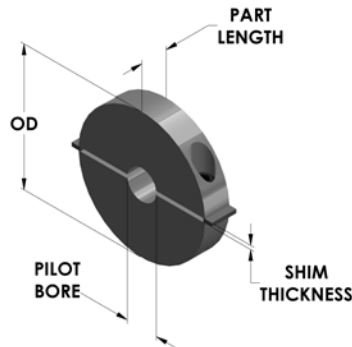


- Collar designed with an undersized ID
- Allows for rebores of the ID without damaging the existing clamp screws
- Pilot bore can be opened safely to the nominal ID reflected in the part number
- Design fully engages the shaft without marring

When rebores the R1C-Series Collars:

1. Start by inserting the shim in the saw cut of the collar as illustrated. Shim thickness is provided in the chart below.

PILOT BORE (IN)	MAX BORE (IN)	OD (IN)	WIDTH (IN)	SHIM THICKNESS (IN)
1/8	3/4	1 3/4	1/2	0.063
1/2	1	2 1/4	1/2	0.063
5/8	1 9/16	2 1/2	1/2	0.093
3/4	2	3 1/4	5/8	0.093
1	2 5/8	4 1/4	3/4	0.125
1 1/4	3	4 1/2	3/4	0.125
2	4 1/4	5 1/2	7/8	0.125
2 1/2	5	6 1/4	7/8	0.125
3	6	7 1/4	7/8	0.125



- Tighten the clamp screw so that the collar clamps down on the shim.
- The collar bore is then machined with the installation screw tightened and the shim firmly in place.

DIMENSION
BORE, INCH

TOLERANCE
+0.003 / -0.000

For 3D
Models &
2D Sales
Drawings

