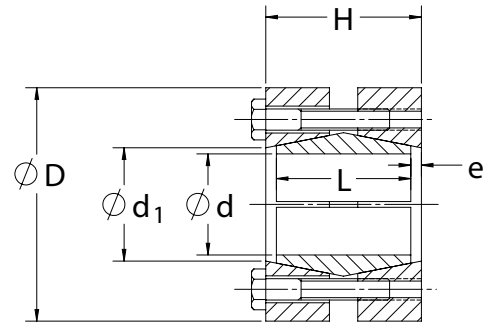




SERIES C600 KEYLESS RIGID COUPLINGS

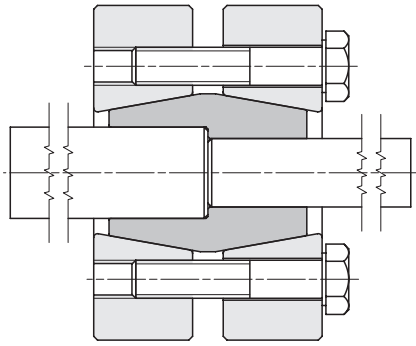
- Cost effective shaft-to-shaft keyless connection
- High torque and bending moment capacity
- Preferred solution for torque-arm mounted hydraulic drives
- Available with stepped bore upon request



Inch

CLIMAX Part No.	Type	Shaft Size (in)	d	M _t (ft-lbs)	D	H	L	e	d ₁	Locking Screws		
										Qty.	Size	M _a (ft-lbs)
C600E-062	15	5/8	0.625	167	2.047	1.339	1.181	0.079	0.827	3	M6 x 30	9
C600E-068		11/16	0.69	184								
C600E-075		3/4	0.750	200								
C600E-081	20	13/16	0.8125	362	2.362	1.575	1.339	0.118	1.024	5	M6 x 35	9
C600E-087		7/8	0.875	390								
C600E-093		15/16	0.9375	418								
C600E-100	25	1	1.000	624	2.598	1.732	1.496	0.118	1.260	7	M6 x 35	9
C600E-106		1 1/16	1.0625	662								
C600E-112		1 1/8	1.125	701								
C600E-118	30	1 3/16	1.1875	846	2.992	1.890	1.654	0.118	1.496	8	M6 x 40	9
C600E-125		1 1/4	1.250	891								
C600E-137		1 3/8	1.375	980								
C600E-143	40	1 7/16	1.4375	1,721	3.780	2.205	1.969	0.118	1.850	7	M8 x 45	22
C600E-150		1 1/2	1.500	1,796								
C600E-162		1 5/8	1.625	1,946								
C600E-168		1 11/16	1.6875	2,021								
C600E-175		1 3/4	1.750	2,095								
C600E-187	50	1 7/8	1.875	3,207	4.409	2.676	2.362	0.157	2.283	10	M8 x 50	22
C600E-193		1 15/16	1.9375	3,314								
C600E-200		2	2.000	3,421								
C600E-212		2 1/8	2.125	3,635								
C600E-218	60	2 3/16	2.1875	4,490	4.724	3.071	2.756	0.157	2.598	12	M8 x 55	22
C600E-225		2 1/4	2.250	4,618								
C600E-237		2 3/8	2.375	4,875								
C600E-243		2 7/16	2.4375	5,003								
C600E-250		2 1/2	2.500	5,132								
C600E-256	70	2 9/16	2.5625	8,197	5.826	3.464	3.150	0.157	3.110	12	M10 x 65	44
C600E-262		2 5/8	2.625	8,397								
C600E-268		2 11/16	2.6875	8,597								
C600E-275		2 3/4	2.750	8,797								
C600E-287		2 7/8	2.875	9,197								
C600E-293	80	2 15/16	2.9375	11,357	6.693	4.095	3.701	0.197	3.701	10	M12 x 80	74
C600E-300		3	3.000	11,599								
C600E-312		3 1/8	3.125	12,082								
C600E-325		3 1/4	3.250	12,566								
C600E-337		3 3/8	3.375	13,049								
C600E-343	90	3 7/16	3.4375	15,949	7.283	4.567	4.173	0.197	4.094	12	M12 x 80	74
C600E-350		3 1/2	3.500	16,239								
C600E-362		3 5/8	3.625	16,819								
C600E-375		3 3/4	3.750	17,399								
C600E-387		3 7/8	3.875	17,979								
C600E-393	100	3 15/16	3.9375	22,836	7.756	4.960	4.488	0.236	4.488	15	M12 x 90	74
C600E-400		4	4.000	23,198								
C600E-425		4 1/4	4.250	24,648								

All dimensions are shown in inches unless stated otherwise. All dimensions and capacities are subject to change without notice.



SERIES C600 KEYLESS RIGID COUPLINGS

CLIMAX Series C600 Keyless Rigid Coupling accommodates different shaft diameters with a stepped-bore inner ring. Our C600 is a cost-effective design alternative to a foot-mounted hydraulic drive with a flexible coupling. See Page 9 for application details.



Metric

CLIMAX Part No.	Type	Shaft Size (mm)	d	M _t (ft-lbs)	D	H	L	e	d ₁	Locking Screws		
										Qty.	Size	M _a (ft-lbs)
C600M-6	6	6	0.236	34	1.38	0.748	0.630	0.060	0.394	4	M5 x 16	3
C600M-7		7	0.276	40								
C600M-8		8	0.315	46								
C600M-9	9	9	0.354	64	1.54	0.906	0.787	0.060	0.512	5	M5 x 20	3
C600M-10		10	0.394	71								
C600M-11		11	0.433	78								
C600M-12	12	12	0.472	102	1.73	1.181	1.024	0.079	0.630	6	M5 x 25	3
C600M-13		13	0.512	111								
C600M-14		14	0.551	120								
C600M-15	15	15	0.591	158	2.047	1.339	1.181	0.079	0.827	3	M6 x 30	9
C600M-16		16	0.630	168								
C600M-17		17	0.669	179								
C600M-18		18	0.709	189								
C600M-19		19	0.748	200								
C600M-20	20	20	0.787	351	2.362	1.575	1.339	0.118	1.024	5	M6 x 35	9
C600M-22		22	0.866	386								
C600M-24		24	0.945	421								
C600M-25	25	25	0.984	614	2.598	1.732	1.496	0.118	1.260	7	M6 x 35	9
C600M-28		28	1.102	687								
C600M-29		29	1.142	712								
C600M-30	30	30	1.181	842	2.992	1.890	1.654	0.118	1.496	8	M6 x 40	9
C600M-32		32	1.260	898								
C600M-35		35	1.378	982								
C600M-36	40	36	1.417	1,697	3.780	2.205	1.969	0.118	1.850	7	M8 x 45	22
C600M-40		40	1.575	1,886								
C600M-44		44	1.732	2,074								
C600M-50	50	50	1.969	3,367	4.409	2.676	2.362	0.157	2.283	10	M8 x 50	22
C600M-51		51	2.008	3,434								
C600M-54		54	2.126	3,637								
C600M-55	60	55	2.165	4,445	4.724	3.071	2.756	0.157	2.598	12	M8 x 55	22
C600M-60		60	2.362	4,849								
C600M-63		63	2.480	5,091								
C600M-65	70	65	2.559	8,186	5.826	3.464	3.150	0.157	3.110	12	M10 x 65	44
C600M-68		68	2.677	8,564								
C600M-70		70	2.756	8,816								
C600M-73		73	2.874	9,194								
C600M-74	80	74	2.913	11,264	6.693	4.095	3.701	0.197	3.701	10	M12 x 80	74
C600M-76		76	2.992	11,569								
C600M-80		80	3.150	12,178								
C600M-85		85	3.346	12,939								
C600M-86	90	86	3.386	15,709	7.283	4.567	4.173	0.197	4.094	12	M12 x 80	74
C600M-90		90	3.543	16,440								
C600M-92		92	3.622	16,805								
C600M-96		96	3.780	17,536								
C600M-100	100	100	3.937	22,833	7.756	4.960	4.488	0.236	4.488	15	M12 x 90	74
C600M-106		106	4.173	24,203								
C600M-108		108	4.252	24,660								
C600M-110		110	4.331	25,116								
C600M-120	120	120	4.724	42,083	9.055	5.984	5.433	0.276	5.276	12	M16 x 110	184
C600M-130		130	5.118	45,590								
C600M-140	140	140	5.512	65,462	11.42	6.850	6.299	0.276	6.299	16	M16 x 120	184
C600M-150		150	5.906	70,138								

All dimensions are shown in inches unless stated otherwise. All dimensions and capacities are subject to change without notice.