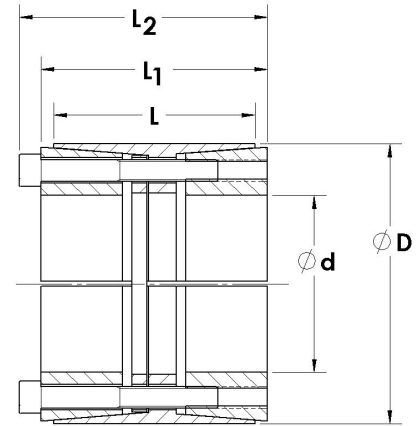




## SERIES C425 LOCKING ASSEMBLY

- Extra heavy duty
- Self-centering, self-locking design
- Widest design transmits highest bending moments



### Metric

CLIMAX Part No.	Shaft Size (mm)	d	D	L	L <sub>1</sub>	L <sub>2</sub>	M <sub>t</sub> (ft-lbs)	F <sub>ax</sub> (lbs.F)	P <sub>s</sub> (psi)	P <sub>h</sub> (psi)	D <sub>n</sub> *	Locking Screws		
												Qty.	Size	M <sub>a</sub> (ft-lbs)
C425M- 180 x 285	180	7.087	11.220	8.071	9.094	9.961	167,265	566,471	32,489	20,451	18.321	14	M22 x 180	686
C425M- 200 x 305	200	7.874	12.008	8.071	9.173	10.039	212,400	647,395	33,359	21,901	20.436	16	M22 x 180	686
C425M- 220 x 325	220	8.661	12.795	8.071	9.016	9.882	233,566	647,191	30,748	20,741	21.063	16	M22 x 180	686
C425M- 240 x 355	240	9.449	13.976	8.189	9.449	10.394	299,720	761,289	31,909	21,611	23.586	16	M24 x 180	885
C425M- 260 x 375	260	10.236	14.764	8.189	9.449	10.394	365,284	856,450	33,214	23,061	26.004	18	M24 x 180	885
C425M- 280 x 405	280	11.024	15.945	8.189	9.370	10.315	437,116	951,665	34,665	23,932	28.841	20	M24 x 180	885
C425M- 300 x 425	300	11.811	16.732	8.189	9.449	10.394	468,386	951,761	31,909	22,481	28.965	20	M24 x 180	885
C425M- 320 x 455	320	12.598	17.913	9.843	11.024	12.087	595,310	1,134,066	30,748	21,611	30.230	18	M27 x 220	1,328
C425M- 340 x 475	340	13.386	18.701	9.843	11.220	12.283	702,838	1,260,146	31,764	22,771	32.653	20	M27 x 220	1,328
C425M- 360 x 495	360	14.173	19.488	9.843	11.142	12.205	818,625	1,386,205	32,924	23,932	35.250	22	M27 x 220	1,328
C425M- 380 x 515	380	14.961	20.276	9.843	11.024	12.087	864,350	1,386,599	31,619	23,351	36.027	22	M27 x 220	1,328
C425M- 400 x 535	400	15.748	21.063	9.843	11.024	12.087	909,338	1,385,830	29,588	22,191	36.151	22	M27 x 220	1,328
C425M- 420 x 555	420	16.535	21.850	9.843	11.220	12.283	1,042,088	1,512,516	30,748	23,351	38.826	24	M27 x 220	1,328
C425M- 440 x 575	440	17.323	22.638	9.843	11.220	12.283	1,091,500	1,512,224	29,443	22,481	39.188	24	M27 x 220	1,328
C425M- 460 x 595	460	18.110	23.425	9.843	11.220	12.283	1,140,913	1,511,957	28,138	21,756	39.698	24	M27 x 220	1,328
C425M- 480 x 615	480	18.898	24.213	9.843	11.220	12.283	1,388,713	1,763,665	31,474	24,512	44.598	28	M27 x 220	1,328
C425M- 500 x 635	500	19.685	25.000	9.843	11.024	12.087	1,446,975	1,764,152	30,603	24,077	45.424	28	M27 x 220	1,328
C425M- 520 x 655	520	20.472	25.787	9.843	11.220	12.283	1,504,500	1,763,737	29,008	23,061	45.421	28	M27 x 220	1,328
C425M- 540 x 675	540	21.260	26.575	9.843	11.024	12.087	1,674,125	1,889,901	30,458	24,367	48.726	30	M27 x 220	1,328
C425M- 560 x 695	560	22.047	27.362	9.843	11.024	12.087	1,736,075	1,889,842	29,298	23,642	49.052	30	M27 x 220	1,328

All dimensions are shown in inches unless stated otherwise. All dimensions and capacities are subject to change without notice.

\* Minimum hub outside diameter based on a Pressure Reduction Factor of C=1.0 and hub material with tensile yield point ≥ 45,000 psi.