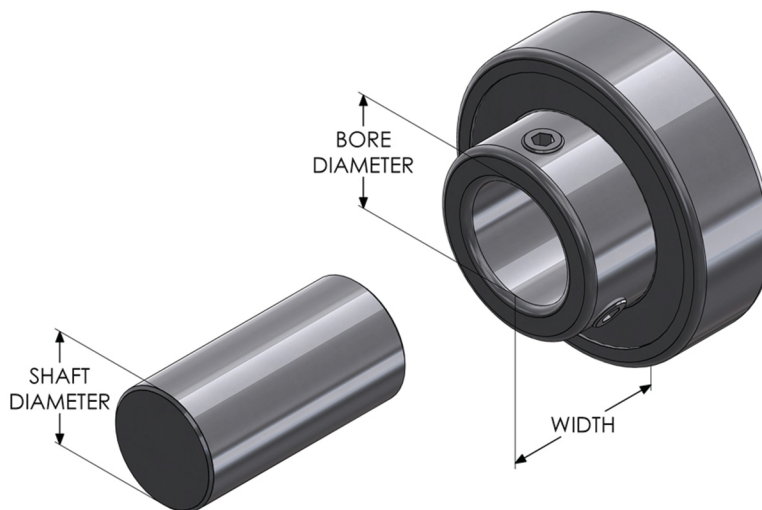


What Tolerances are Climax Ball Bearing Units Manufactured To?

All ball bearing units supplied by Climax Metal Products are manufactured to tolerance class ABEC-1 per ANSI/ABMA Std 7, latest revision. Bearing tolerances are based on the nominal bore or inner diameter of the bearing. The following table lists tolerances for the bearing bore, bore runout, bearing width, and the diameter of the shaft on which the bearing will be mounted.



Bore Diameter (in)	Bore Diameter Tolerance (in)	Bore Radial Runout Tolerance (in)	Width Tolerance (in)	Shaft Diameter Tolerance (in)
1/2	+0.0005 / +0.0010	Max +0.0004	+0.0000 / -0.0047	+0.000 / -0.001
5/8	+0.0005 / +0.0010	Max +0.0004	+0.0000 / -0.0047	+0.000 / -0.001
3/4	+0.0005 / +0.0010	Max +0.0005	+0.0000 / -0.0047	+0.000 / -0.001
1	+0.0005 / +0.0010	Max +0.0006	+0.0000 / -0.0047	+0.000 / -0.001

For additional questions on our line of Light Duty Mounted Bearings, contact our Customer Service Department.

